

RNA Recognition Motif (RRM) of La/SSB: The Bridge for Interparticle Spreading of Autoimmune Response to U1-RNP

John G Routsias, Nikolaos Kyriakidis, Michael Latreille, and Athanasios G Tzioufas

Department of Pathophysiology, School of Medicine, National University of Athens, Athens, Greece

Systemic lupus erythematosus (SLE) is characterized by the production of grouped sets of autoantibodies targeting mainly the U1 ribonucleoprotein (RNP) and/or Ro/La RNP particles. Intraparticle diversification of the autoimmune response is believed to occur via epitope spreading. So far, it is not known how the autoimmune response “jumps” from one particle to another. To the extent that the majority of nuclear autoantigens in SLE are RNA binding proteins and major epitopes were previously mapped within their RRM (RNA recognition motifs), conserved sequences within RRM could be involved in the intermolecular and interparticle diversification process of the autoimmune response. We investigated the potential of RRM of the La/SSB autoantigen to induce antibodies that cross-recognize components of the U1-RNP particle and therefore its capacity to produce interparticle epitope spreading. We immunized New Zealand white rabbits with a peptide corresponding to the epitope 145–164 of La/SSB (belonging to the RRM of La/SSB), attached in four copies on a scaffold carrier. Sera were drawn from 20 sera of patients with SLE and anti-U1-RNP antibodies and 26 sera of primary Sjögren syndrome patients with anti-La/SSB antibodies. All sera were evaluated for reactivity against the major epitope of La/SSB (pep349–364), the RNP antigen and the RRM-related epitope of La/SSB (pep145–164). Specific antibodies against pep145–164 were purified with immunoaffinity columns from selected sera. After the immunization of the animals with pep145–164, a specific IgG antibody response was detected, directed against the La/SSB autoantigen (wks 3–7), the immunizing peptide (wks 3–27), and the RNP autoantigen (wks 7–20). This response gradually decreased to low levels between postimmunization wks 27–42. Purified antibodies against pep145–164 recognized La/SSB and a 70-kD autoantigen in Western blot and exhibited significant reactivity in anti-U1-RNP ELISA. Depletion of anti-pep145–164 antibodies eliminated anti-U1-RNP reactivity from immunized rabbit sera but not from human sera. In addition, pep145–164 was recognized to a greater extent by autoimmune sera with anti-RNP reactivity compared with anti-La/SSB-positive sera, in contrast to pep349–364 of La/SSB, which was recognized almost exclusively by sera with anti-La/SSB reactivity. These data suggest that the RRM region of La/SSB can trigger interparticle B-cell diversification to U1-RNP-70 autoantigen via molecular mimicry. Identification of key sequences that trigger and perpetuate the autoimmune process is particularly important for understanding pathogenetic mechanisms in autoimmunity.

© 2010 The Feinstein Institute for Medical Research, www.feinsteininstitute.org

Online address: <http://www.molmed.org>

doi: 10.2119/molmed.2009.00106

INTRODUCTION

Autoimmune diseases, caused by a breakdown in self tolerance, are characterized by the appearance of autoantibodies and autoreactive T lymphocytes. Systemic lupus erythematosus (SLE) is considered the prototypic systemic autoimmune disease disorder involving both humoral and cellular forms of adaptive immune response and affecting the skin, joints, kidneys, lungs, nervous system,

serous membranes and virtually every organ in the body (1).

SLE is characterized by the production of autoantibodies to ribonucleoprotein (RNP) complexes. These autoantibodies often arise in 2 grouped sets targeting the U1-RNP complex and/or Ro/La particle (2). The U1-RNP particle is a major component of the spliceosome, catalyzing pre-messenger RNA (mRNA) splicing into mRNA. Together with the Sm

proteins, U1-RNP contains specific proteins (RNP 70, RNP A and RNP C) that interact with the 164-nucleotide-long U1 RNA. The RNP-70 and RNP-A proteins bear classical RNA recognition motifs (RRMs) and bind directly to the U1 RNA, whereas RNP-C protein associates via protein-protein interactions with RNP-70 and one or more of the Sm proteins (3). Similarly, the Ro/La particle is composed of 1 of 4 small, uridine-rich hY RNAs (human cytoplasmic RNAs) non-covalently associated with at least three proteins, the Ro52, La/SSB and Ro60 autoantigens (4). La/SSB and Ro60 proteins possess RNA binding motifs (classical RRM and TROVE [telomerase-RO-vault-element], respectively) allowing their direct binding to hYRNA, whereas Ro52

Address correspondence and reprint requests to John G Routsias, Department of Pathophysiology, School of Medicine, National University of Athens, 75 Mikras Asias Street, 115 27 Athens, Greece. Phone: + 30-210-7462670; Fax: + 30-210-7462664; E-mail: jroutsias@med.uoa.gr.

Submitted August 10, 2009; Accepted for publication October 12, 2009; Epub (www.molmed.org) ahead of print October 14, 2009.

participates in the complex via protein-protein interactions (2,5). The localization of Ro/La complexes is mainly cytoplasmic, but their assembly is performed in the nucleus (6,7).

The Ro/La RNP particle has been claimed to play an important role in the initiation of autoimmunity, because autoantibodies targeting this particle usually appear before clinical manifestations of SLE and earlier than anti-Sm and anti-nuclear RNP antibodies (mean 3.4 years versus 1.2 years) (8). The proportion of SLE patients with anti-Sm or anti-nuclear RNP antibodies increases dramatically in the year before diagnosis, indicating that appearance of these autoantibodies heralds the clinical onset of the disease (8). Specifically, the clinical onset of disease coincides not so much with the appearance of anti-Sm or RNP antibodies but with the cessation of the development of new autoantibody specificities. Indeed, the rate of appearance of new autoantibody specificities has been found to gradually increase until the diagnosis of SLE and to be halted afterward (8).

Diversification and augmentation of the autoimmune response is believed to occur via epitope spreading, a process whereby distinct and non-cross-reactive epitopes are created (9,10). Two types of epitope spreading have been described: intramolecular spreading, in which the autoimmune response spreads in epitopes within the same protein, and intermolecular spreading, which also involves other protein components physically associated within the same antigenic complex, such as a spliceosome and Ro/La particles. It is not yet known how the autoimmune response “jumps” from one particle to another. To the extent that the majority of nuclear autoantigens in SLE are RNA-binding proteins and major epitopes were previously mapped within their RRM motifs (in the case of La/SSB, RNP-A and RNP-70 autoantigens) (2), molecular similarity of conserved sequences within RRM could be involved in the intermolecular and interparticle

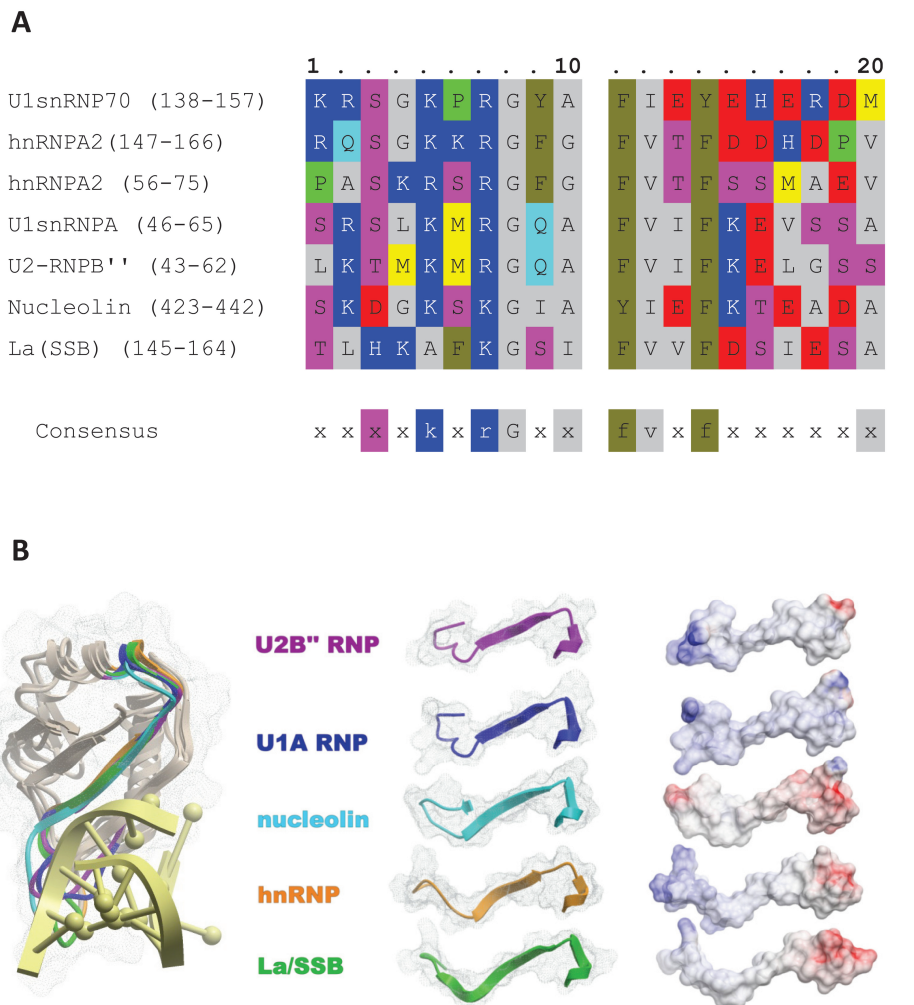


Figure 1. (A) Sequence similarity and conserved regions among the RNA recognition (RNP1) motif of several spliceosomal and other autoantigens. Homologous amino acid residues are represented in different colors. The conserved consensus pattern is shown under the sequences. (B) Structural similarity of the epitope 145–164 aa within the RNP1 motif of La/SSB with other autoantigens. Superimposed structures of the RNP1 regions of the autoantigens U2B'' RNP (PDB: 1A9N, (20)), U1A RNP (PDB: 1OIA, (19)), nucleolin (PDB: 1RKJ, (18)), hnRNP (PDB: 1x4B), and La/SSB (PDB: 1ZH5, (21)) are depicted (on the left) in complex with a UUU_{OH} -RNA dimer obtained from structure 1ZH5 (shown in yellow). The homologous regions with the La/SSB epitope are represented as ribbons with different colors, and their electrostatic potential is depicted on the right (positive charges in blue color, negative charges in red, and neutral regions in gray). All structures obtained from the PDB database.

diversification process of the autoimmune response. Here we report our exploration of the potential of the RRM of the La/SSB autoantigen to induce antibodies that recognize components of U1- RNP particle, and therefore its capacity to produce interparticle epitope spreading.

MATERIALS AND METHODS

Human Sera

Sera were obtained from 72 patients with primary Sjögren syndrome (pSS) (11), 82 patients with SLE (12), 38 patients with rheumatoid arthritis (RA) (13) and 55 healthy subjects. All patients ful-

filled the American/European classification criteria (11–13). All sera had been previously screened for the presence of anti-Ro/SSA and anti-La/SSB autoantibodies by counterimmunoelectrophoresis (CIE) and immunoblot, as described previously (14).

Peptide Synthesis and Purification

The linear B-cell epitope of La/SSB that resides within its RRM¹⁴⁵ TLHKAFKGSIFVVFDSIESA¹⁶⁴, and the major epitope of La/SSB³⁴⁹ GSGKGVQFQGKTKF³⁶⁴ were synthesized as multiple antigenic peptides (MAP) attached in four copies to the tetrameric MAP backbone and used for immunization and ELISA experiments. The irrelevant peptide IASRYDQL (corresponding to the sequence 250–257aa of *Leishmania* glycoprotein gp63), selected because it has the same charge with pep145–164 at pH 7, was attached in MAP scaffold-like pep145–164 and used as control peptide (ctrl-pep). An additional peptide corresponding to the epitope¹⁴⁵ TLHKAFKGSIFVVFDSIESA¹⁶⁴ was synthesized in its free form and used for antibody purification and evaluation of their reactivity. All peptides were synthesized according to the solid-phase peptide synthesis procedure, purified with fast protein liquid chromatography and tested by mass spectrometry for confirmation of their sequence identity.

Rabbit Immunization

Ten New Zealand White female rabbits, 6±8-wks-old, were immunized according to a previously described protocol (15), using 0.5 mg immunogen emulsified in complete Freund's adjuvant (CFA) for the first injection and incomplete Freund's adjuvant for the subsequent injections. Successive bleedings were performed before the immunizations of the animals at wks 0, 3, 7, 13, 20, 27, 38 and 42.

Estimation of Anti-La/SSB and Anti-U1-RNP Reactivity

Recombinant human La/SSB whole protein was constructed using the methodology that has been previously de-

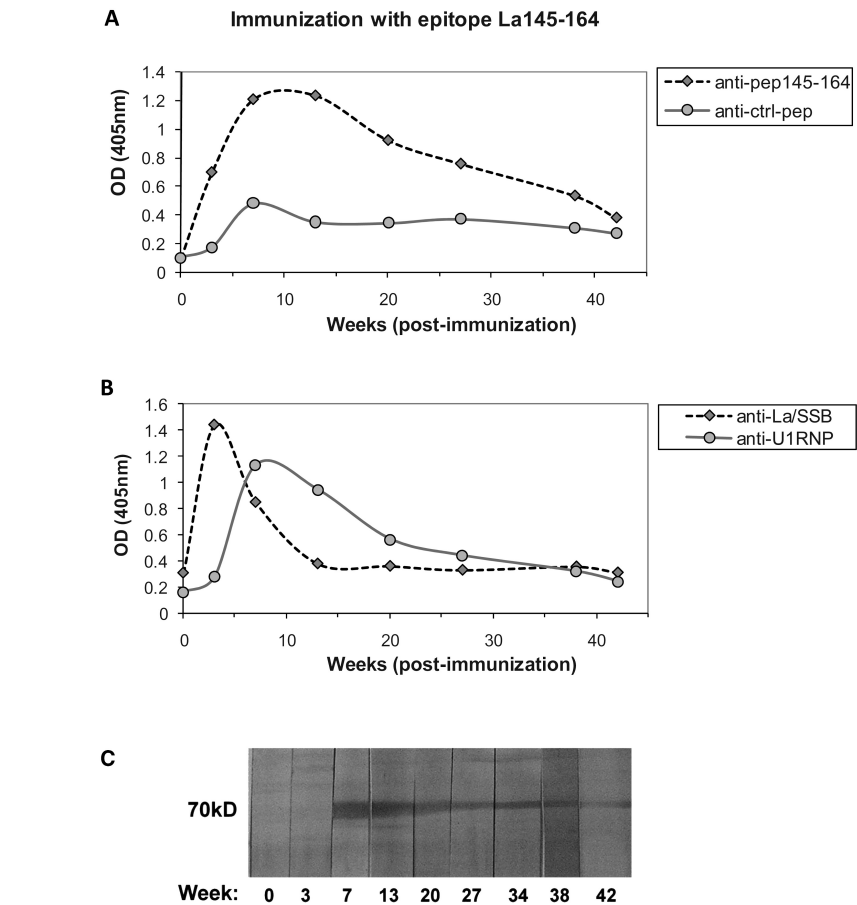


Figure 2. Immunization of rabbits with the epitope 145–164 aa of La/SSB. (A) Reactivity against pep145–164 and control peptide at different postimmunization time points. (B) Reactivity against La/SSB and U1-RNP antigens as assessed by specific ELISA assays. The development of anti-La/SSB antibodies (at wk 3) preceded the production of anti-U1-RNP antibodies (wk 7–20). (C) Western blot (using rabbit thymus extract) showing the development and the attenuation of anti-70kD activity of rabbit sera after immunization with pep145–164.

scribed by Troster *et al.* (16) and used in enzyme-linked immunosorbent assay (ELISA) according to a previously published protocol (17) with modifications in the coating conditions. More specifically, plates were coated with recombinant La/SSB in the presence of 6M urea to denature the autoantigen and to remove any RNA that could mask its RRM domains. The anti-U1-RNP reactivity was monitored by a commercially available ELISA based on affinity purified autoantigen (RNP ELISA; IBL, Hamburg, Germany).

ELISA Assays with Synthetic Peptides

Specific antipeptide ELISA assays were developed and performed to detect the

antibodies in human sera as well as in rabbit sera. Sera from all animals were tested against the peptides pep145–164, pep349–364 and ctrl-pep peptide. Sera from patients were tested for reactivity against the peptides pep145–164 and pep349–364; 96-well polystyrene plates (Costar, Corning, NY, USA) were coated with the solution of the coating peptide at a concentration of 5 µg/mL in carbonate-bicarbonate buffer (pH 9.6). Nonspecific-binding was blocked using blocking buffer consisting of bovine serum albumin 2% wt/vol in phosphate buffered saline (PBS) pH 7.4. Afterward, rabbit sera or human sera were added to blocking buffer in a dilution of 1:700 or 1:140, re-

spectively. After an incubation period of 2 h at room temperature, the ELISA plates were washed three times with PBS. Alkaline phosphatase-conjugated antirabbit IgG or antihuman IgG (Jackson Immuno-research, West Grove, PA, USA), diluted 1:1400 in blocking buffer, was added to the assays with the rabbit or the human sera, respectively, and the plates were incubated for 1 h. Subsequently, the wells were washed and 100 μ L *p*-nitrophenol substrate (Sigma-Aldrich, Munich, Germany) was added, and the absorbance was measured at 405 nm. The cutoff point for the assays with human sera was set as the mean optical density values plus three standard deviations of sera from 55 healthy individuals.

To exclude background binding and verify the coating efficiency in ELISA experiments, each plate was divided into two halves, one coated with pep145–164 and one coated with MAP carrier and blocked with albumin blocking buffer. None of the rabbit sera exhibited significant reactivity with MAP carrier or albumin. In the experiments done for human sera screening, 2 SLE sera demonstrated significant binding to MAP and/or albumin and they excluded from data analysis.

Purification of Human Anti-pep145–164aa Antibodies

Total IgG from the sera of three patients, containing autoantibodies to the La/SSB epitope 145–164, were purified by affinity chromatography using a protein-A Sepharose 4B column. IgG fractions were concentrated and dialyzed against PBS. A specific immunoaffinity column of cyanogen bromide (CNBr)-activated Sepharose 4B (Pharmacia Biotech, Uppsala, Sweden) was generated by standard methods, using 10 mg of the synthetic pep145–164. Anti-pep145–164 IgG antibodies were purified from the three human fractions of total IgG as well as from rabbit sera immunized with pep145–164 by using standard immunoaffinity procedure (elution was performed with 0.1 mol/L HCl-Gly, pH 2.7). Antibody concentra-

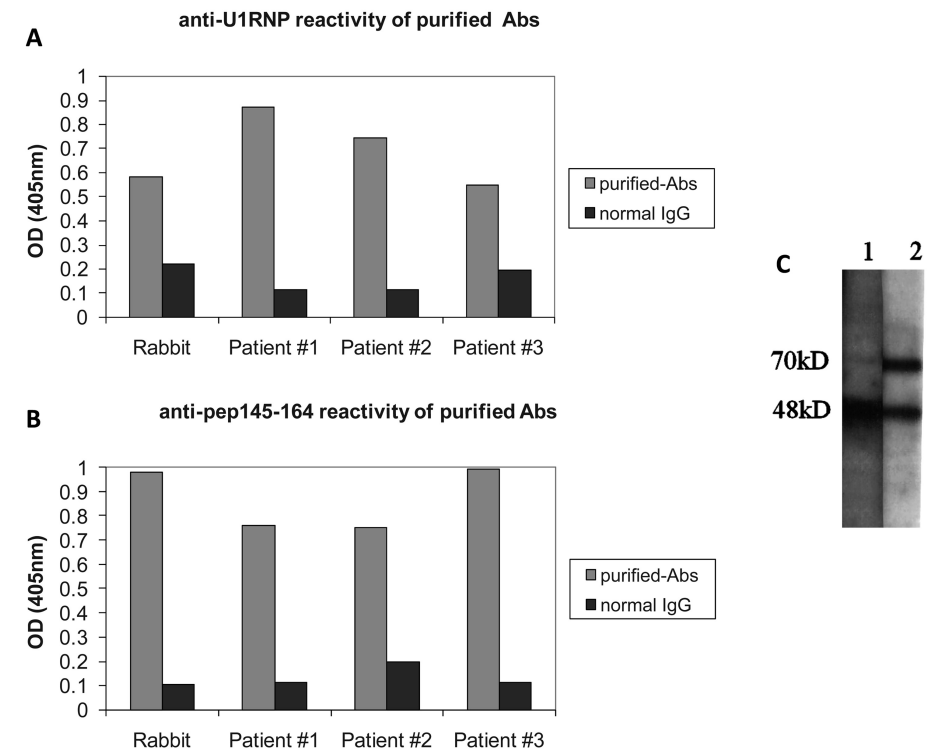


Figure 3. Assessment of the reactivity of purified anti-pep145–164 antibodies from three patients and immunized rabbits. All purified antibodies recognized U1-RNP (A) and pep145–164 (B) in ELISA. Purified antibodies from two patients were also tested in Western Blot against HeLa extract (C) and found to recognize bands at 48kD and 70kD, corresponding to La/SSB and RNP-70 autoantigens.

tion was measured using the Bradford assay.

Western Blotting

Rabbit thymus extract was first subjected to electrophoresis in 12% SDS-polyacrylamide gels and then transferred to nitrocellulose. The blotted strips were saturated in Tris-buffered saline, pH 7.5, containing 0.1% Tween (TBS-T) and 5% nonfat milk for 1 h at room temperature, and then incubated with rabbit antisera diluted 1:120 in TBS-T milk overnight at 4°C. After washing, strips were incubated with alkaline-phosphatase conjugated antibodies to rabbit IgG (1:1,100 in TBS-T milk). Afterward, the strips were washed and nitro-blue-tetrazolium chloride/5-bromo-4-chloro-3-indolylphosphate substrate (Amersham Pharmacia Biotech, Buckinghamshire, UK) was used to reveal positive reactions.

RESULTS

Sequence and Structural Similarity between the RRM Belonging to Different Autoantigens

According to our hypothesis, a consensus sequence within the RRM domain conserved in many autoantigens, might play a role as driver epitope for intermolecular and interparticle epitope spreading in systemic autoimmunity. We examined the sequence and structural similarity among the RRM motifs of several self-proteins. A homologous region was identified in the central part of the RRM. Although the degree of similarity in its primary structure was moderate, varying between 35% and 60% (Figure 1A), all RRM regions adopted a very similar tertiary structure (Figure 1B) (18–21) that could favor a potential cross-recognition by autoanti-

bodies. The homologous region of La/SSB (aa145–164) had been previously characterized by our group as an SLE-associated B-cell epitope (14), serving also as a T-cell epitope (22) in rabbit immunization experiments.

Antibodies Generated in Rabbits Immunized with the Epitope 145–164 of La/SSB React with the Cognate Protein and with the U1-RNP Autoantigen

In our diversification model, the RRM of La/SSB may have been involved in the induction of the antisplenic autoimmune response via molecular mimicry. To investigate this possibility, we immunized New Zealand white rabbits with pep145–164 of La/SSB. Sera from rabbits were collected at different pre- and postimmunization time points and tested for reactivity against the immunizing peptide and a control peptide. It was found that 3 wks after the first immunization rabbits produced antibodies toward the immunizing peptide, which reached their maximum reactivity between wks 7 and 13. In contrast, no reactivity against the control peptide was observed (Figure 2A).

We also investigated whether antibodies raised against peptide pep145–164 of La/SSB were able to recognize the whole cognate protein and proteins present in the U1-RNP particle. It was found that the first-appearing antibodies, capable of recognizing the La/SSB protein (at wk 3 after the immunization) were progressively eliminated at wk 13. The development of anti-La/SSB antibodies was followed by the production of anti-U1-RNP antibodies at wk 7, which remained at high levels until wk 20 (Figure 2B). Therefore, immunization with an autopeptide of La/SSB autoantigen can produce antibodies capable of recognizing components of another autoantigenic complex, the U1-RNP.

To confirm the above findings the sequential sera from immunized rabbits were tested in Western blot against a rabbit thymus extract. At wk 7, a band at 70 kD appeared, which exactly followed

the kinetics of anti-U1-RNP antibodies in terms of time and signal intensity (Figure 2C).

Purification of Antibodies toward the Epitope 145–164 of La/SSB Reveals their Capacity to Cross-Recognize U1-RNP Autoantigen

To gain further insight into the mechanism involved in the recognition of U1-RNP autoantigen by autoantibodies in our model, we coupled the latter peptide onto an immunoaffinity column and performed affinity purification of specific antipeptide antibodies from immunized rabbit and patient sera with anti-pep145–164 reactivity. It was found that anti-pep145–164 antibodies from immunized rabbits recognized not only the peptide against which they were purified (Figure 3A) but also the U1-RNP autoantigen (Figure 3B). This observation was also true for human sera from patients with SLE, demonstrating that specific antibodies that bind to a conserved epitope of La/SSB also have the capacity to cross-recognize U1-RNP autoantigen. Purified antibodies from patients with SLE were also tested in Western Blot against HeLa extract. Specific bands at molecular weights of 48 kD and 70 kD were detected (Figure 3C). Comparison with reference sera indicated that these bands most likely correspond to La/SSB and RNP-70 autoantigens. Since purified anti-pep145–164 antibodies recognize the U1-RNP antigen, we expect that purified anti-U1-RNP antibodies will also recognize pep145–164 of La/SSB. However, this experiment has not been done.

To examine if epitope recognition on U1-RNP autoantigen is expanded beyond the RRM homologous region, we investigated whether anti-U1-RNP reactivity of human and rabbit sera could be absorbed onto the RRM peptide (pep145–164 immunoaffinity column). It was found that after the depletion of anti-pep145–164 antibodies, sera of immunized rabbits lost their capacity to recognize U1-RNP autoantigen. In contrast, the serum of human study patient 1, which was subjected to the same immunoaffinity col-

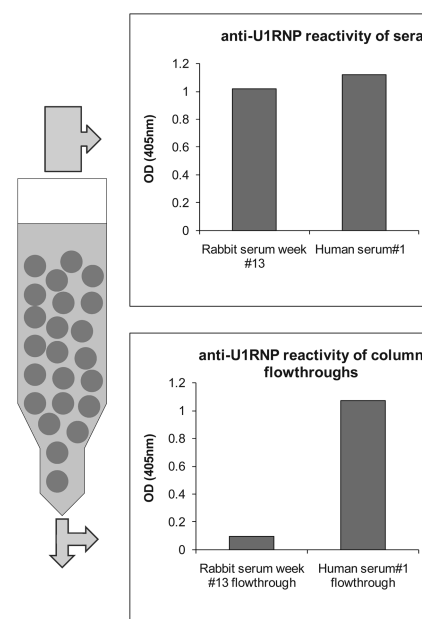


Figure 4. Assessment of the reactivity of sera before and after affinity purification of anti-pep145–164 antibodies. Depletion of anti-pep145–164 antibodies eliminated the anti-U1-RNP reactivity of immunized rabbit serum (wk 13) but not the anti-U1-RNP reactivity of patient #1 serum. All sera and flowthroughs were diluted properly to contain approximately 15 μ g/mL of IgG.

umn, completely retained its anti-U1-RNP reactivity (Figure 4). These observations strongly indicate that immunized rabbit sera (tested at postimmunization wk 13) react with the homologous RRM region of U1-RNP but not with other epitopes on the same autoantigen. On the other hand human sera recognize multiple epitopes on U1-RNP autoantigen, and their anti-U1-RNP reactivity cannot be absorbed onto pep145–164. Additional evidence was obtained by competitive ELISA assays, which demonstrated that anti-U1-RNP reactivity of immunized rabbit sera could be inhibited (52%–59%) by incubation with pep149–164 peptide (data not shown).

Prevalence of Anti-pep145–164 Antibodies in Autoimmune Sera

We next examined the prevalence of antibodies against pep145–164 in differ-

ent autoimmune diseases, as well as in normal populations. Antibodies recognizing the epitope 145–164 of La/SSB were detected in 29% of SLE, 39% of SS, and 13% of RA sera, but not in sera from healthy individuals (Figure 5A). Analysis of the reactivities of the sera according to their autoantibody specificity in CIE demonstrated that although these antibodies were common in both anti-La/SSB-positive and anti-RNP-positive sera, their reactivity was higher in RNP-positive sera ($t = 4.07$, $P = 0.0002$), which occurs mainly in patients with SLE (Figure 5B).

To examine the autoantibody reactivity profile of the patient sera in more detail, we evaluated their reactivity against the pep145–164 of La/SSB and the pSS-related major epitope of La/SSB (pep349–364) with regard to their specificity in CIE. It was found that patient sera could be divided into 3 groups: (a) sera with anti-pep349–364 antibodies alone, (b) sera with both anti-pep145–164 and anti-pep349–364 antibodies and (c) sera with anti-pep145–164 antibodies alone (Figure 6A). Notably, all sera from group c were anti-RNP-positive sera, whereas sera belonging to groups (a) and (b) were anti-La/SSB-positive sera. Therefore, the existence of anti-pep145–164 without anti-pep349–364 antibodies is an exclusive feature of anti-RNP-positive sera. The autoantibody specificity of the sera was further confirmed by anti-La/SSB and anti-U1-RNP ELISA assays (Figure 6B).

DISCUSSION

The autoantibody diversification in SLE has been partially elucidated via the proposed mechanism of intra- and intermolecular spreading (9,10). This mechanism may explain the different clusters of autoantibodies in SLE (against spliceosome and hYRNPs), but not the sequential appearance of autoantibodies against autoantigens belonging to different macromolecular complexes. The results of the present study provide evidence that a conserved sequence within the RRM motif of the La/SSB autoantigen

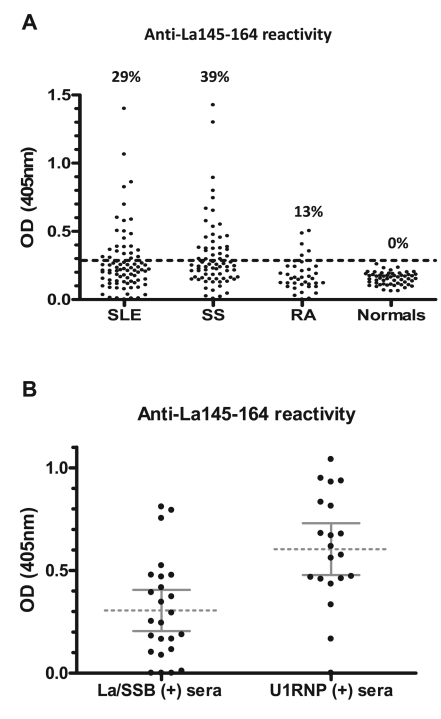


Figure 5. (A) Prevalence of anti-pep145–164 antibodies in autoimmune sera from patients with SLE, pSS, or RA and healthy individuals (normals). (B) Analysis of the reactivities against pep145–164 of the sera according to their autoantibody specificity in CIE. Anti-pep145–164 reactivity was found to be higher in RNP-positive (+) sera ($P = 0.0002$).

can induce antibodies that cross-recognize components of the U1-RNP particle.

We first noticed that the RRMs belonging to different autoantigens adopt a very similar tertiary structure (necessary for their interaction with RNA) and possess a conserved sequence in their central part. Although Ro60 protein possesses RRM domains, the degree of their sequence similarity with RRMs of the components of the U1-RNP complex is lower compared with La/SSB autoantigen. Moreover, the conserved sequence of the RRM of La/SSB has been previously characterized in our laboratory as B-cell/T-cell epitope associated with SLE (14,22).

Rabbits immunized with pep145–164 of La/SSB produced both anti-La/SSB and anti-U1-RNP antibodies in a two-step pattern, with anti-La/SSB antibodies appearing first, followed by anti-U1-

RNP antibodies. Because the conserved RRM regions of La/SSB and RNP-70 autoantigens differ significantly in their amino acid sequence, it is not surprising that a period of time was required in order for anti-pep145–164 antibodies to adapt their specificity to U1-RNP. The appearance of antibodies targeting U1-RNP might also be explained by a different mechanism, involving intramolecular spreading to another unidentified epitope of La/SSB followed by cross-recognition of U1-RNP. To elucidate the mechanisms, specific anti-pep145–164 antibodies were purified from immunized rabbits and found to cross-recognize directly the U1-RNP. Furthermore, to gain insight into human disease, we also purified specific anti-pep145–164 antibodies from SLE patient sera. These antibodies also recognized U1-RNP. Although both rabbit and human sera recognized the U1-RNP autoantigen, their reactivity could be discriminated on the basis of its ability to be absorbed onto pep145–164. Thus, immunized rabbit sera lost their reactivity after passage through the pep145–164 immunoaffinity column, but human sera did not. These results most likely reflect the limited epitope recognition in rabbits (owing to the cross-reaction with the RRM homologous region) and the multiple epitope recognition by human SLE sera. These findings are also consistent with previous studies reporting that limited epitope recognition on an autoantigen occurs when the immunizing peptide has a low degree of sequence similarity with it (23). In this case an additional step is required (for example, affinity maturation of antibodies in the presence of U1-RNP autoantigen) to gain diversification of immune response to additional epitopes of U1-RNP.

Antibodies against pep145–164 were detected in 39% of patients with pSS and in a small subgroup of patients with RA. However, anti-RNP-positive sera, which occur mainly in patients with SLE, demonstrated significantly higher reactivity for anti-pep145–164 antibodies as compared with anti-RNP-negative sera.

These sera did not possess reactivity against the epitope 349–364, which has been previously characterized as the major, associated with pSS, epitope of La/SSB (14). We should also note that these sera were found to be negative for anti-La/SSB antibodies in CIE, which most likely reflects either a limited epitope recognition within La/SSB autoantigen that is insufficient to produce an immunoprecipitation reaction in CIE or an epitope masking by hY-RNA bound in the RRM region of La/SSB in assays employing the antigen in its natural conformation (24).

Our experimental data strongly reinforce the hypothetical model proposed some years ago by Monneaux and Muller (9,25). In this model, the RRM consensus sequence can drive epitope spreading in spliceosomal proteins via molecular mimicry (25). In this regard, Monneaux and Muller demonstrated that immunization of rabbits with a peptide corresponding to the epitope 131–151aa within the RRM of RNP-70 could produce antibodies that recognize, in addition to the cognate protein, the components RNP-A, RNP-C and Sm-D of the U1-RNP particle (26). These antibodies had the capacity to cross-recognize peptides corresponding to the RRMs of different nuclear autoantigens, such as RNP-70, RNP-A and hnRNP-A2 (26). According to this model, the RRM initiates spreading of the immune response to the whole protein (intramolecular spreading), then spreading proceeds in an ordered manner to other proteins containing the RRM(s) and, finally, to proteins that do not contain any RRM but are also localized in the same particle (intermolecular spreading). To date, experimental data exist only for epitope spreading via RRMs to the physically associated spliceosomal proteins. Our present data provide for the first time evidence that interparticle spreading of immune response via RRM can also occur. The proposed model can also be applied to other “driver” epitopes such as the proline-rich region PPPGMRPP that holds a cross-reactive epitope, present in several spliceo-

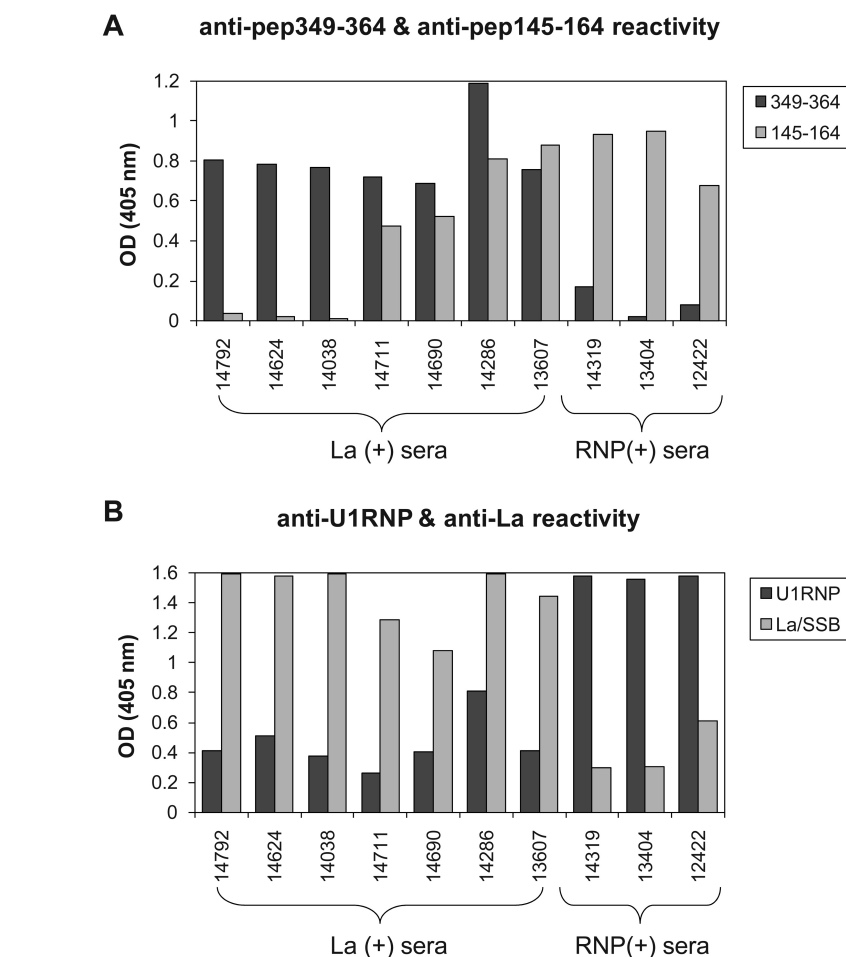


Figure 6. Reactivity of representative sera against the RRM-related epitope 145–164 and the major epitope 349–364 of La/SSB (A) as well as against U1-RNP and La/SSB autoantigens (B). The existence of anti-pep145–164 without anti-pep349–364 antibodies is a feature found exclusively in anti-RNP-positive (+) sera. Anti-La (+) sera can contain either anti-pep349–364 alone or anti-pep349–364 accompanied by anti-pep145–164 antibodies.

somal autoantigens and recently identified as an early target of RNP humoral autoimmunity in SLE (27). In this regard, in addition to intramolecular and intermolecular spreading, the autoimmune response diversifies via molecular mimicry with key sequences, common in autoantigens targeted in SLE.

Taken together, our data suggest that the RRM region of La/SSB can trigger interparticle B-cell diversification to U1-RNP, confirming the importance of the RRM region in the pathway of events leading to autoimmunity in SLE. Identification of key sequences that trigger and perpetuate the autoimmune process

is particularly important for understanding the initial events in autoimmune response and designing specific therapeutic strategies capable of blocking the cascade of spreading (taking place during the development of autoimmune response).

ACKNOWLEDGMENTS

The authors thank H. Moutsopoulos for useful discussion and advice.

DISCLOSURE

The authors declare that they have no competing interests as defined by *Molecular Medicine*, or other interests that

might be perceived to influence the results and discussion reported in this paper.

REFERENCES

- Vlachoyiannopoulos PG, Karassa FB, Karakostas KX, Drosos AA, Moutsopoulos HM. (1993) Systemic lupus erythematosus in Greece. Clinical features, evolution and outcome: a descriptive analysis of 292 patients. *Lupus*. 2:303–12.
- Routsias JG, Vlachoyiannopoulos PG, Tzioufas AG. (2006) Autoantibodies to intracellular autoantigens and their B-cell epitopes: molecular probes to study the autoimmune response. *Crit. Rev. Clin. Lab. Sci.* 43:203–48.
- van Venrooij WJ, Pruijn GJ. (1995) Ribonucleoprotein complexes as autoantigens. *Curr. Opin. Immunol.* 7:819–24.
- Slobbe RL, Pluk W, van Venrooij WJ, Pruijn GJ. (1992) Ro ribonucleoprotein assembly in vitro. Identification of RNA-protein and protein-protein interactions. *J. Mol. Biol.* 227:361–6.
- Routsias JG, Tzioufas AG, Moutsopoulos HM. (2004) The clinical value of intracellular autoantigen B-cell epitopes in systemic rheumatic diseases. *Clin. Chim. Acta.* 340:1–25.
- Sim S, et al. (2009) The subcellular distribution of an RNA quality control protein, the Ro autoantigen, is regulated by noncoding Y RNA binding. *Mol. Biol. Cell.* 20:1555–64.
- Simons FH, Pruijn GJ, van Venrooij WJ. (1994) Analysis of the intracellular localization and assembly of Ro ribonucleoprotein particles by microinjection into *Xenopus laevis* oocytes. *J. Cell Biol.* 125:981–8.
- Arbuckle MR, et al. (2003) Development of autoantibodies before the clinical onset of systemic lupus erythematosus. *N. Engl. J. Med.* 349:1526–33.
- Monneaux F, Muller S. (2002) Epitope spreading in systemic lupus erythematosus: identification of triggering peptide sequences. *Arthritis Rheum.* 46:1430–8.
- Moutsopoulos NM, Routsias JG, Vlachoyiannopoulos PG, Tzioufas AG, Moutsopoulos HM. (2000) B-cell epitopes of intracellular autoantigens: myth and reality. *Mol. Med.* 6:141–51.
- Vitali C, et al. (2002) Classification criteria for Sjogren's syndrome: a revised version of the European criteria proposed by the American-European Consensus Group. *Ann. Rheum. Dis.* 61:554–8.
- Tan EM, et al. (1982) The 1982 revised criteria for the classification of systemic lupus erythematosus. *Arthritis Rheum.* 25:1271–7.
- Arnett FC, et al. (1988) The American Rheumatism Association 1987 revised criteria for the classification of rheumatoid arthritis. *Arthritis Rheum.* 31:315–24.
- Tzioufas AG, et al. (1997) Fine specificity of autoantibodies to La/SSB: epitope mapping, and characterization. *Clin. Exp. Immunol.* 108:191–8.
- James JA, Gross T, Scofield RH, Harley JB. (1995) Immunoglobulin epitope spreading and autoimmune disease after peptide immunization: Sm B/B'-derived PPPGMRPP and PPPGIRGP induce spliceosome autoimmunity. *J. Exp. Med.* 181:453–61.
- Troster H, et al. (1994) One gene, two transcripts: isolation of an alternative transcript encoding for the autoantigen La/SS-B from a cDNA library of a patient with primary Sjogren's syndrome. *J. Exp. Med.* 180:2059–67.
- Routsias JG, et al. (2003) Idiotype-anti-idiotypic circuit in non-autoimmune mice after immunization with the epitope and complementary epitope 289–308aa of La/SSB: implications for the maintenance and perpetuation of the anti-La/SSB response. *J. Autoimmun.* 21:17–26.
- Johansson C, et al. (2004) Solution structure of the complex formed by the two N-terminal RNA-binding domains of nucleolin and a pre-rRNA target. *J. Mol. Biol.* 337:799–816.
- Nagai K, Oubridge C, Jessen TH, Li J, Evans PR. (1990) Crystal structure of the RNA-binding domain of the U1 small nuclear ribonucleoprotein A. *Nature.* 348:515–20.
- Price SR, Evans PR, Nagai K. (1998) Crystal structure of the spliceosomal U2B'-U2A' protein complex bound to a fragment of U2 small nuclear RNA. *Nature.* 394:645–50.
- Teplova M, et al. (2006) Structural basis for recognition and sequestration of UUU(OH) 3' termini of nascent RNA polymerase III transcripts by La, a rheumatic disease autoantigen. *Mol. Cell.* 21:75–85.
- Yiannaki E, et al. (2000) Study of antibody and T cell responses in rabbits immunized with synthetic human B cell epitope analogues of La (SSB) autoantigen. *Clin. Exp. Immunol.* 121:551–6.
- Scofield RH, et al. (1999) Immunization of mice with human 60-kd Ro peptides results in epitope spreading if the peptides are highly homologous between human and mouse. *Arthritis Rheum.* 42:1017–24.
- Gonzalez C, et al. (1997) Comparison and variation of different methodologies for the detection of autoantibodies to nuclear antigens (ANA). *J. Clin. Lab. Anal.* 11:388–92.
- Monneaux F, Muller S. (2001) Key sequences involved in the spreading of the systemic autoimmune response to spliceosomal proteins. *Scand J. Immunol.* 54:45–54.
- Monneaux F, Parietti V, Briand JP, Muller S. (2007) Importance of spliceosomal RNP1 motif for intermolecular T-B cell spreading and tolerance restoration in lupus. *Arthritis Res. Ther.* 9:R111.
- Poole BD, et al. (2009) Early targets of nuclear RNP humoral autoimmunity in human systemic lupus erythematosus. *Arthritis Rheum.* 60:848–59.