

RESEARCH ARTICLE

Open Access



# Angiopoietin 1 influences ischemic reperfusion renal injury via modulating endothelium survival and regeneration

Wen-Chih Chiang<sup>1</sup>, Yu-Chin Huang<sup>2†</sup>, Ten-I Fu<sup>1†</sup>, Ping-Min Chen<sup>1</sup>, Fan-Chi Chang<sup>1</sup>, Chun-Fu Lai<sup>1</sup>, Vin-Cent Wu<sup>1</sup>, Shuei-Liong Lin<sup>1,3</sup> and Yung-Ming Chen<sup>1,4\*</sup>

## Abstract

**Background:** Damage to the endothelium due to ischemia reperfusion injury (IRI) leads to a disruption of the microvasculature, which could be influenced by angiopoietin 1 via its effects on endothelium. We investigated the physiological and therapeutic roles of angiopoietin 1 in renal IRI using *angiopoietin 1* knockout and over-expression mice.

**Methods:** Renal IRI was induced by clamping the right renal artery seven days after left uninephrectomy for 25 min followed by reperfusion. A whole body *angiopoietin 1* knockout was achieved by induction with tamoxifen. The renal tubule over-expression of *angiopoietin 1* was induced by doxycycline.

**Results:** In the normal mice, the renal expression of *angiopoietin 1* increased 7 days to 14 days after IRI. The *angiopoietin 1* knockout caused a delay in the recovery of renal function, less tubular regeneration and more residual tubular necrosis. The endothelial density was lower and the VE-cadherin protein loss was greater in the knockout mice. The over-expression of *angiopoietin 1* attenuated the tubular necrosis and renal function impairment 1 and 3 days after IRI. The loss of the endothelium was ameliorated in the over-expression mice. This protective effect was associated with the up-regulation of the gene expression of *epidermal growth factor*, *hepatocyte growth factor*, and *insulin like growth factor-1* and less tubular apoptosis. The over-expression of *angiopoietin 1* stimulated *tumor necrosis factor- $\alpha$* , *C-C chemokine receptor type 2* and *CX3C chemokine receptor 1* inflammatory gene expression, but did not influence macrophage infiltration.

**Conclusions:** Altogether, the augmentation and downregulation of angiopoietin 1 attenuated renal damage and impaired renal recovery, respectively, by influencing the survival/regeneration of the endothelium. The manipulation of angiopoietin 1 represents a novel therapeutic approach for the treatment of ischemic kidney injury.

**Keywords:** Acute kidney injury, Angiopoietin 1, Endothelium, Ischemic reperfusion injury, Kidney

## Background

Acute kidney injury (AKI) occurs in a variety of clinical settings and is usually associated with excessively high morbidity and mortality. The renal injury status and recovery process can determine the outcome of patients with AKI and influence the development and progression of chronic kidney disease (Wu et al., 2014; Wu et al., 2011). Clinically, most cases of AKI are caused by ischemic reperfusion

injury (IRI) during/after sepsis or surgery. Therefore, understanding the pathophysiology of ischemic reperfusion renal injury is highly important for developing novel strategies for the treatment of ischemic AKI.

The initiating event of acute ischemic reperfusion injury is an abrupt decrease in renal blood flow. However, a full recovery of renal microvascular blood flow after acute ischemia occurs in only one-third to one-quarter of cases (Conger et al., 1995). The sustained decrease in blood flow after an acute insult keeps the renal tissues persistently ischemic and aggravates renal damage. Several mechanisms can lead to a decrease in renal blood flow after ischemia. First, the endothelium dies and

\* Correspondence: [chenym@ntuh.gov.tw](mailto:chenym@ntuh.gov.tw)

<sup>†</sup>Yu Chin Huang and Ten I. Fu contributed equally to this work.

<sup>1</sup>Department of Internal Medicine, National Taiwan University Hospital, No. 7, Zhong-Shan South Road, Taipei 100, Taiwan

<sup>4</sup>College of Medicine, National Taiwan University, Taipei, Taiwan

Full list of author information is available at the end of the article



sloughs from the basement membrane after IRI. A certain degree of functional impairment is observed in the blood vessel with a poor response to endothelium-dependent vasodilators (Conger et al., 1995), such as nitric oxide (Kwon et al., 2009) and acetylcholine (Lieberthal et al., 1989). In addition, a blood vessel without an endothelium is prone to prolonged vasoconstriction and sporadic cessation of blood flow in peritubular capillaries, which usually occurs during the reperfusion phase (Brodsky et al., 2002; Yamamoto et al., 2002). In addition to the reduced total renal blood flow, a regional alteration in renal blood flow occurs during AKI, and the perfusion of outer medulla is reduced disproportionately more than the total kidney (Le Dorze et al., 2009; Mason et al., 1984; Karlberg et al., 1983). Damage to renal vascular endothelial cells plays a key role in the continued ischemia of the renal tubular epithelium and inflammatory response observed during ischemic AKI (Sutton et al., 2002). Actin cytoskeleton and junctional alterations also occur in renal microvascular endothelial cells during injury (Sutton et al., 2003). In the cerebral and coronary vasculature, the separation of the endothelial tight junctions, loss of endothelial attachment to the basement membrane, endothelial blebbing, and endothelial necrosis were observed following ischemic injury (Pomfy et al., 1995; van der Poll & van Deventer, 1999). Increased renal peritubular capillary permeability was found to be a consequence of ischemic AKI in animal models (Sutton et al., 2003; Olof et al., 1990). These events lead to fluid leakage into the pericapillary space resulting in the formation of interstitial edema and reduction of renal blood flow. Therefore, increasing renal blood flow and protecting the endothelium from damage may attenuate ischemic reperfusion renal injury. Indeed, the administration of differentiated endothelial cells has been shown to ameliorate the no-reflow phenomenon in the post-ischemic kidney and result in significant functional protection in IRI (Brodsky et al., 2002).

The angiotensin system is a well-known system involved in angiogenesis. The angiotensins and their cognate receptors, mainly tyrosine kinase with Ig and EGF homology domains 2 (Tie 2), are involved in vascular generation, development and maturation (Morisada et al., 2006; Lobov et al., 2002; Maisonpierre et al., 1997; Suri et al., 1996). Angiotensin 1 (Angpt1) is generated from vascular mural cells, pericytes, and certain other cells (Maisonpierre et al., 1997; Suri et al., 1996). Angpt1 participates in vascular differentiation through angiogenesis, which is the process of the growth and remodelling of existing vessels. Angpt1 is also involved in the maintenance and turnover of blood vessels in mature animals. Angpt1 oligomers and multimers bind to Tie 2, leading to enhanced endothelial survival and endothelial cell–cell stabilization (Kim et al., 2005). These Angpt1 effects may play a protective role in acute renal IRI. However, certain

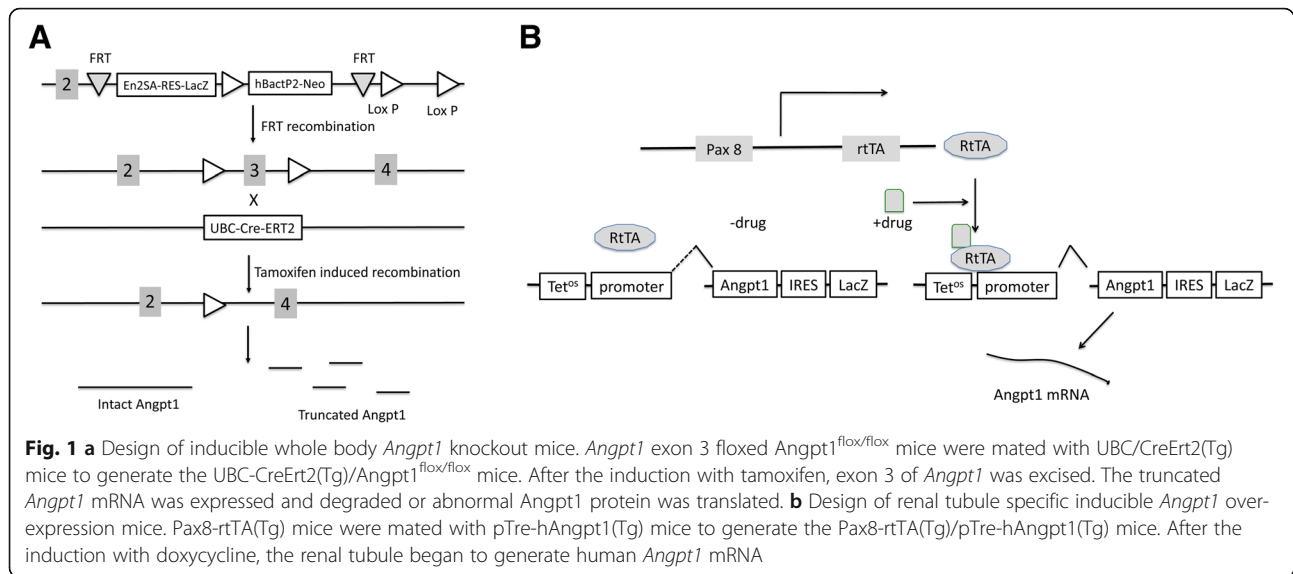
clinical conditions may suppress Angpt1 expression and influence the development of or recovery from IRI. For example, circulatory Angpt1 is suppressed in patients with severe sepsis or acute respiratory distress syndrome (Giuliano Jr. et al., 2007; Ricciuto et al., 2011). In animal studies, the expression levels of Angpt1 in the diaphragm, liver, and lung were significantly attenuated following lipopolysaccharide administration in mice (Mofarrahi et al., 2008). Furthermore, plasma Angpt1 is associated with a lower risk of AKI in human beings (Robinson-Cohen et al., 2016). Among septic shock patients, the Angpt1 level in the AKI group was significantly lower than that in the non-AKI group (Ebihara et al., 2016). In an animal model, the administration of Angpt1-treated early endothelial outgrowth cells can reduce renal damage in acute ischemic kidney injury (Patschan et al., 2013).

To further explore the role of Angpt1 in the evolution of ischemic AKI in vivo, in this study, we used conditional *Angpt1* knockout mice to mimic the clinical condition of suppressed Angpt1 and inducible *Angpt1* over-expression mice that had enhanced renal Angpt1 expression. According to our data, Angpt1 plays an important role in endothelium survival and recovery from renal IRI, suggesting that the augmentation of Angpt1 could represent a new therapeutic strategy for preventing and managing AKI.

## Methods

### Construction of inducible *Angpt1* knockout and over-expression mice

To generate the inducible *Angpt1* knockout mice, LoxP flanked *Angpt1* exon 3 (*Angpt1*<sup>fllox/fllox</sup>) mice were generated at the National Taiwan University Research Center for Medical Excellence - Division of Genomic Medicine, Transgenic Core. An embryonic stem cell clone carrying loxP flanked *Angpt1* exon 3 DNA (Fig. 1a) was purchased from Sanger (UK). After the flipase recombinase target recombination in the embryonic cells, the Lac Z/neo cassette was excised, and exon 3 was flanked with two loxP sequences that were susceptible to Cre recombinase excision. The *Angpt1*<sup>fllox/fllox</sup> mice were mated with UBC-CreErt2(Tg) mice (Jackson Laboratory stock #008083) to generate the UBC-Ert2Cre(Tg)/*Angpt1*<sup>fllox/fllox</sup> mice. The UBC-CreErt2(Tg)/*Angpt1*<sup>fllox/fllox</sup> mice express estrogen receptor fusion Cre recombinase in all cells. After the induction with tamoxifen (1 mg/mouse for 5 days/week for 2 successive weeks) in the 8~10 weeks old UBC-CreErt2(Tg)/*Angpt1*<sup>fllox/fllox</sup> mice, the *Angpt1* exon 3 was excised, abnormal *Angpt1* mRNA was generated and then degraded or abnormal Angpt1 protein was generated. After the *Angpt1* knockout, the genotype was confirmed by PCR diagnostic tests using suitable primers (Table 1). The littermate *Angpt1*<sup>fllox/fllox</sup> mice were used as



the control mice of UBC-CreErt2(Tg)/*Angpt1*<sup>fllox/fllox</sup> mice. They received tamoxifen treatment the same as the experimental *Angpt1* knockout mice. The Tet-on system *Angpt1* over-expression mice were generated by mating Pax8-rtTA(Tg) mice (provided by Dr. Robert Koesters, University of Heidelberg) with pTre-h*Angpt1*(Tg) mice (provided by Dr. Daniel Dumont, University of Toronto) to generate Pax8-rtTA(Tg)/pTre-h*Angpt1*(Tg) mice (Fig. 1b). The pTre-h*Angpt1*(Tg) mice were generated by utilizing a pTRE LacZ/*Ang1* construct to generate transgenic mice. In the presence of doxycycline (100 µg/mL in 5% glucose drinking water), rtTA expressed by Pax8-rtTA(Tg) cDNA binds to tetracycline-response operon promoter element and initiates transcription from the cytomegalovirus (CMV) promoter of the LacZ/*hAngpt-1* cDNA. Expression of human *Angpt1* was induced by doxycycline 7 days before uninephrectomy in the 8~10 weeks old mice until sacrifice (total doxycycline administration duration: 14~21 days). The littermate pTre-h*Angpt1*(Tg) mice were used as the control mice of Pax8-rtTA(Tg)/pTre-h*Angpt1*(Tg) human *Angpt1* over-expression mice. They received doxycycline treatment the same as the Pax8-rtTA(Tg)/pTre-h*Angpt1*(Tg) human *Angpt1* over-expression mice. The genotype of the Pax8-rtTA(Tg)/pTre-h*Angpt1*(Tg) mice was confirmed by PCR using suitable primers (Table 1). We use this type of transgenic mice to express *Angpt1* in renal tubule and exert its paracrine function on renal endothelium.

#### Animal model: Ischemic reperfusion renal injury model

The C57BL6/J (8~10 weeks old), UBC-CreErt2(Tg)/*Angpt1*<sup>fllox/fllox</sup> (11~13 weeks old, 1 week after the completion of 2 week of tamoxifen induction) and Pax8-rtTA(Tg)/

pTre-h*Angpt1*(Tg) (10~12 weeks old, 1 week after the initiation of doxycycline induction) mice were subjected to right uninephrectomy. One week after uninephrectomy, the ischemic reperfusion renal injury was achieved by clamping the left renal artery for 25 min, followed by reperfusion of renal blood flow by removing the blood vessel clamp. The ischemia was confirmed by red black colour changes after the renal artery clamping, and reperfusion was confirmed by a regaining of the fresh red colour after removing the vessel clamping. The sham mice received right uninephrectomy and abdominal wall open operation but without ischemic reperfusion renal injury. All procedures were performed at a body temperature of 37 °C.

#### Renal histopathology, immunofluorescence staining and immunohistochemistry

The kidneys were not fixed or fixed in paraformaldehyde and sectioned into 6-µm slices. For the morphological examination, the kidney slices were stained with periodic acid-Schiff and haematoxylin. The classification of healthy, injured, necrotic or recovering tubules was defined according to the morphology, nuclear number and integrity of renal tubules. Healthy tubule shows a normal cellular morphology. Necrotic tubules exhibit a compromised monolayer with evident cell loss and disappearance of cell morphology. Injured tubules exhibit a thinned cellular monolayer and contain fewer nuclei. Recovering tubules exhibit a more normal cellular morphology and a similar number of nuclei to healthy tubules (Hesketh et al., 2014). For the immunostaining, the kidney slices were subjected to antigen retrieval with microwave treatment in a sodium citrate buffer. The tissue sections were permeabilized with 0.3% Triton-X 100 in PBS, blocked with 5% normal goat or donkey serum, and probed with the primary antibody.

**Table 1** Primers

Primers	Sequence
Primers used in Genotyping PCR reaction	
Angpt1 knock out F	5' AAC CTT TCC CTC CCC TTT TT 3'
Angpt1 knock out R	5' TTG GTG CTG CTG AAG AAA TG 3'
UBC-CreErt2 F	5'-GCA AGA ACC TGA TGG ACA-3'
UBC-CreErt2 R	5'- CTA GAG CCT GTT TTG CAC-3'
Pax8-rtTA F	5'-CCA TGT CTA GAC TGG ACA AGA-3'
Pax8-rtTA R	5'-CTC CAG GCC ACA TAT GAT TAG-3'
rtTA-hAngpt1 F	5' ATA GGA ACC AGC CTC CTC TCT 3'
rtTA-hAngpt1 R	5' AAG GAC ACT GTT GTT GGT GGT 3'
Primers used in quantitative RT-PCR	
Mouse GAPDH F	5' CCT GGA GAA ACC TGC CAA GTA T 3'
Mouse GAPDH R	5' CAT ACC AGG AAA TGA GCT TGA CA 3'
Human Angpt1 F	5' TCA ATC TTT GCA CTA AAG AAG GTG T 3'
Human Angpt1 R	5' GTC CAA CCT CCC CCA TTG AC 3'
Mouse Angpt1 F	5' GGC CAC CAT GCT TGA GAT AG 3'
Mouse Angpt1 R	5' TTT CAA GTC GGG ATG TTT GA 3'
Mouse TNF- $\alpha$ F	5' TAG CCA GGA GGG AGA ACA GA 3'
Mouse TNF- $\alpha$ R	5' TTT TCT GGA GGG AGA TGT GG 3'
Mouse IL-1 $\beta$ F	5' CCC AAG CAA TAC CCA AAG AA 3'
Mouse IL-1 $\beta$ R	5' GCT TGT GCT CTG CTT GTG AG 3'
Mouse MCP-1 F	5' AGC ACC AGC CAA CTC TCA CT 3'
Mouse MCP-1 R	5' CGT TAA CTG CAT CTG GCT GA 3'
Mouse IL-6 F	5' AGA CAA AGC CAG AGT CCT TCA 3'
Mouse IL-6 R	5' GGT CCT TAG CCA CTC CTT CTG 3'
Mouse CX3CR1 F	5' GGA GAC TGG AGC CAA CAG AG 3'
Mouse CX3CR1 R	5' CCT GAT CCA GGG AAT GCT AA 3'
Mouse CXCL2 F	5' CAG ACT CCA GCC ACA CTT CA 3'
Mouse CXCL2 R	5' CAG TTC ACT GGC CAC AAC AG 3'
Mouse CCL3 F	5' ATG AAG GTC TCC ACC ACT GC 3'
Mouse CCL3 R	5' GAT GAA TTG GCG TGG AAT CT 3'
Mouse CCR2 F	5' ATT CTC CAC ACC CTG TTT CG 3'
Mouse CCR2 R	5' GAT TCC TGG AAG GTG GTC AA 3'
Mouse CCL17 F	5' AGT GGA GTG TTC CAG GGA TG 3'
Mouse CCL17 R	5' CTG GTC ACA GGC CGT TTT AT 3'
Mouse Arginase 1 F	5' AGC ACT GAG GAA AGC TGG TC 3'
Mouse Arginase 1R	5' CAG ACC GTG GGT TCT TCA CA 3'
Mouse IGF-1 F	5' GGC ATT GTG GAT GAG TGT TG 3'
Mouse IGF-1 R	5' TCT CCT TTG CAG CTT CGT TT 3'
Mouse EGF F	5' AGT CAG ACC GAA AGA GCT GTG 3'
Mouse EGF R	5' CCT GGG AAT TTG CAA ACA GT 3'
Mouse HGF F	5' CGC TAC GAA GTC TGT GAC ATT C 3'

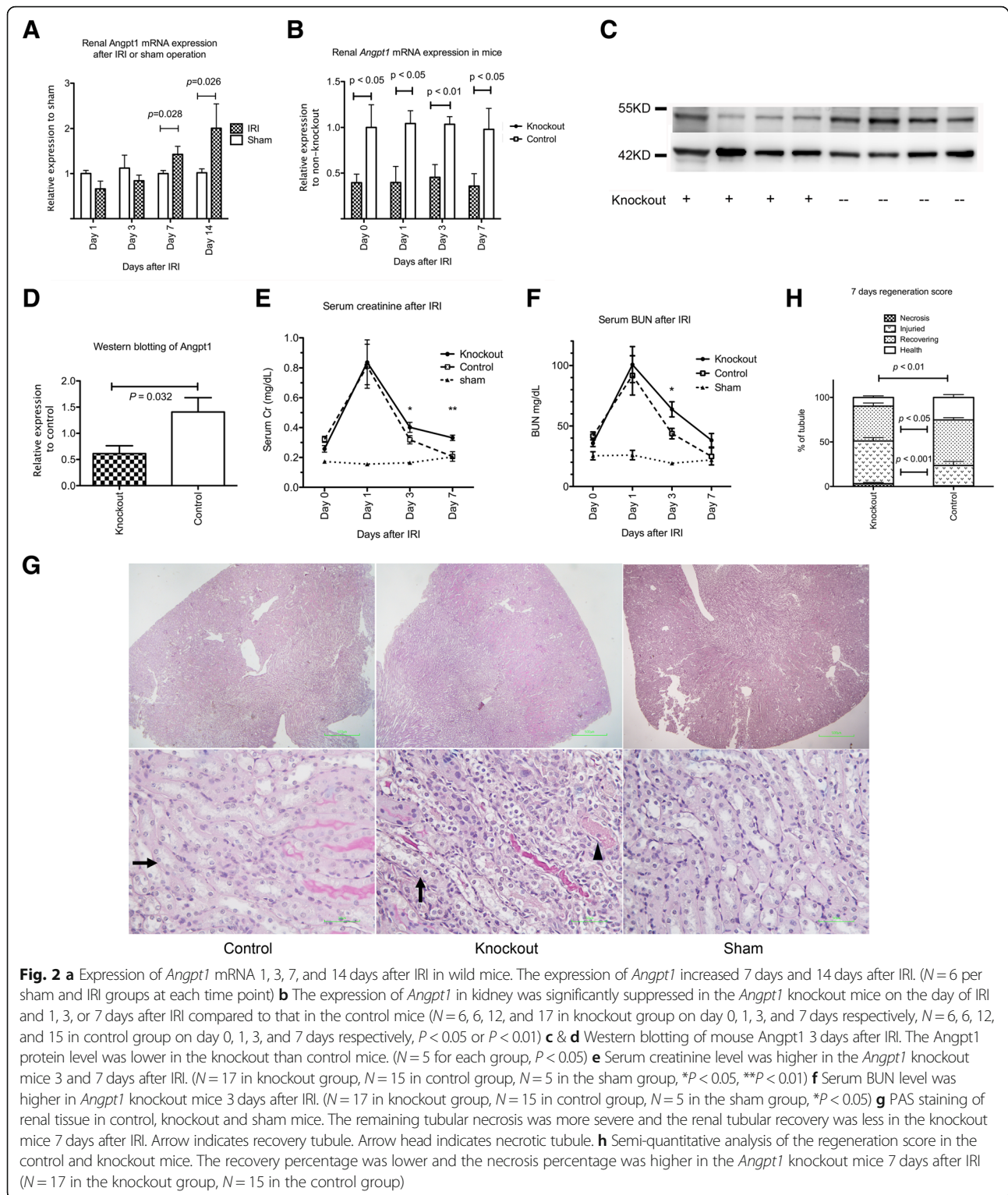
**Table 1** Primers (Continued)

Primers	Sequence
Mouse HGF R	5' CAT GGG ACC TCT GTA GCT TTC AC 3'
Mouse PDGF-A F	5' GAT GAG GAC CTG GGC TTG 3'
Mouse PDGF-A R	5' GAT CAA CTC CCG GGG TAT CT 3'
Mouse PDGF-B F	5' CCC ACA GTG GCT TTT CAT TT 3'
Mouse PDGF-B R	5' GTG AAC GTA GGG GAA GTG GA 3'

After washing, the tissue sections were probed with fluorophore-conjugated secondary antibodies (Invitrogen, Waltham, MA, USA). Then, the tissue sections were mounted and fluorescence microscopy was performed. In the immunohistochemical study, a peroxidase-conjugated linker was added after washing off the primary antibody. The staining was performed using DAB as a substrate, and the nucleus was counterstained with haematoxylin. The CD31 density (vessel density) index was calculated by dividing the CD31-positively stained area by the kidney area. The tubular apoptosis was performed with ApopTag Peroxidase In Situ Apoptosis Detection Kit (Merk Millipore, Darmstadt, Germany) The amount of Ki67, CD68 or apoptotic tubular cells in the cortical medulla junction were counted by semi-quantitative method per high power field under microscopy. Eight to twelve 400x magnification fields were taken from each mouse. The average numbers were taken into the calculation of the means for each group.

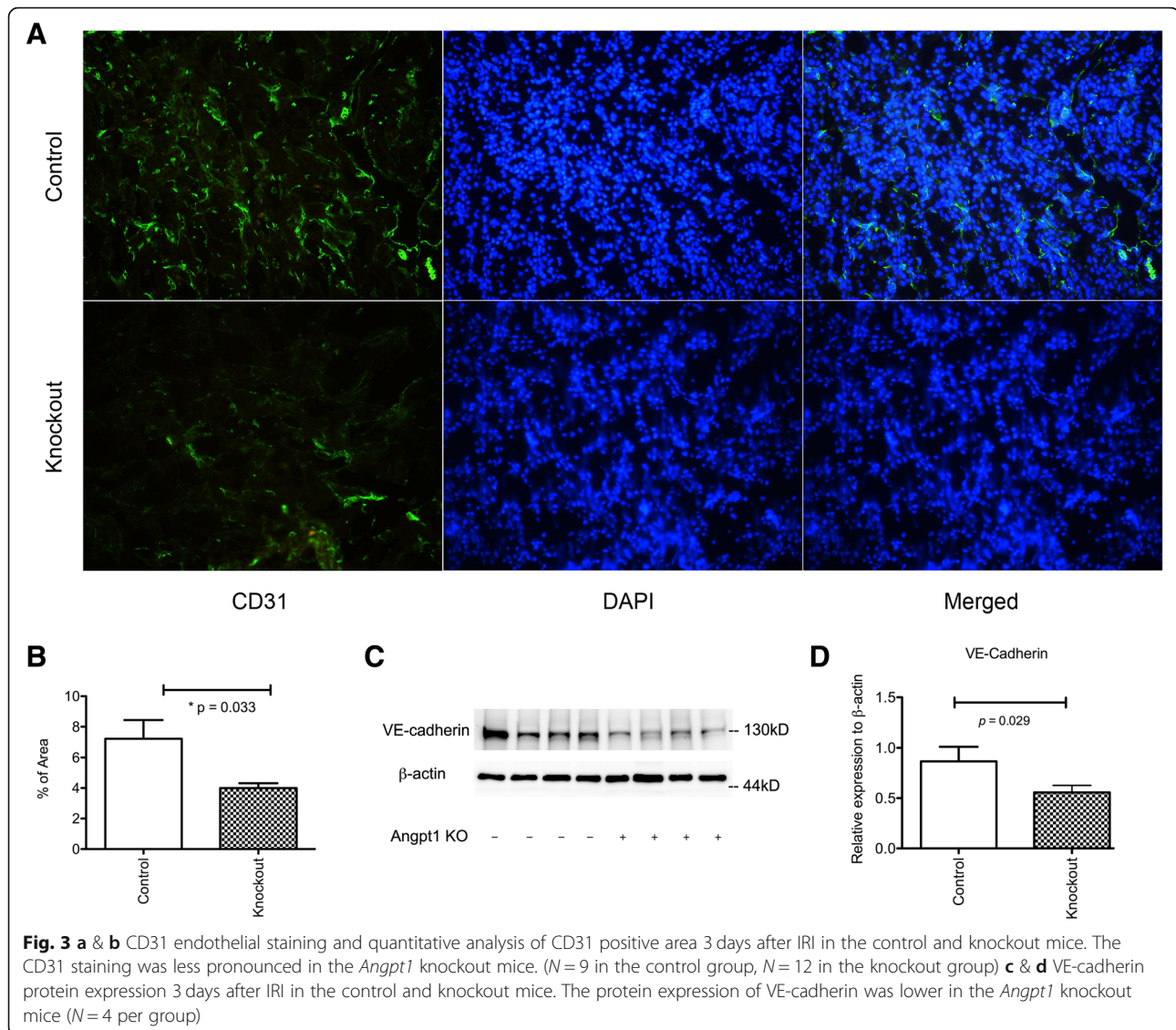
#### Gene expression and quantitative PCR, Western blotting, and enzyme linked immunosorbent assay

The gene expression levels were evaluated using the real-time quantitative PCR method. RNA was extracted from the isolated kidney, subjected to DNase digestion (Qiagen, Valencia, CA, USA), and reverse-transcribed using oligo-dT primers (Tools Quant II fast RT kit, BioTools, Lognholme, Australia). The gene expression levels were determined by real-time quantitative PCR using Sybr green. Inflammatory and growth factor genes, such as tumour necrosis- $\alpha$  (*TNF- $\alpha$* ), *interleukin-1 $\beta$*  (*IL-1 $\beta$* ), *interleukin-6*, (*IL-6*), *monocyte chemoattractant protein-1* (*MCP-1*), *CX3C chemokine receptor 1* (*CX3CR1*), *Chemokine (C-X-C motif) ligand 2* (*CXCL2*), *Chemokine (C-C motif) ligand 3* (*CCL3*), *Chemokine (C-C motif) ligand 17* (*CCL17*), *C-C chemokine receptor type 2* (*CCR2*), *arginase 1* (*Arg1*), *platelet derived growth factor-A* (*PDGF-A*), *platelet derived growth factor-B* (*PDGF-B*), *insulin like growth factor-1* (*IGF-1*), *epidermal growth factor* (*EGF*), and *hepatocyte growth factor* (*HGF*) were analysed using suitable primers (Table 1). The gene expression levels in each mouse were analysed using the relative quantitative method. The *Glyceraldehyde 3-phosphate dehydrogenase* gene was used as an internal control.



The kidney tissue was lysed with RIPA buffer containing proteinase and phosphatase inhibitors. The protein was subjected to SDS-PAGE electrophoresis, transferred to a PVDF membrane, and blotted with the suitable primary antibody. Human *Angpt1* was measured

with enzyme linked immunosorbent assay (ELISA) kit for human *Angpt1* (R&D, Minneapolis, USA). The measure human *Angpt1* protein concentration was corrected by the sampled tissue protein concentration after measurement with ELISA.



## Materials

The anti-CD31 antibody was obtained from eBioscience (San Diego, CA, USA). The anti-VE-cadherin and anti-CD68 antibody were obtained from Abcam (Cambridge, MA, USA). The anti-Ki67 antibody was purchased from Merck Millipore (Burlington, MA, USA). Anti- $\beta$ -actin was obtained from Millipore Sigma (Burlington, MA, USA). The antibody against mouse *Angpt1* antibody was from Gene Tex Inc. (San Antonio, TX, USA).

## Biochemistry, various measurements and statistics

The blood urea nitrogen and serum/urine creatinine levels were determined by the central lab of National Taiwan University Hospital. The urine albumin level was evaluated using ELISA kit (Bethyl Laboratory, Montgomery, TE, USA). The degree of proteinuria was evaluated according to the urine albumin/creatinine

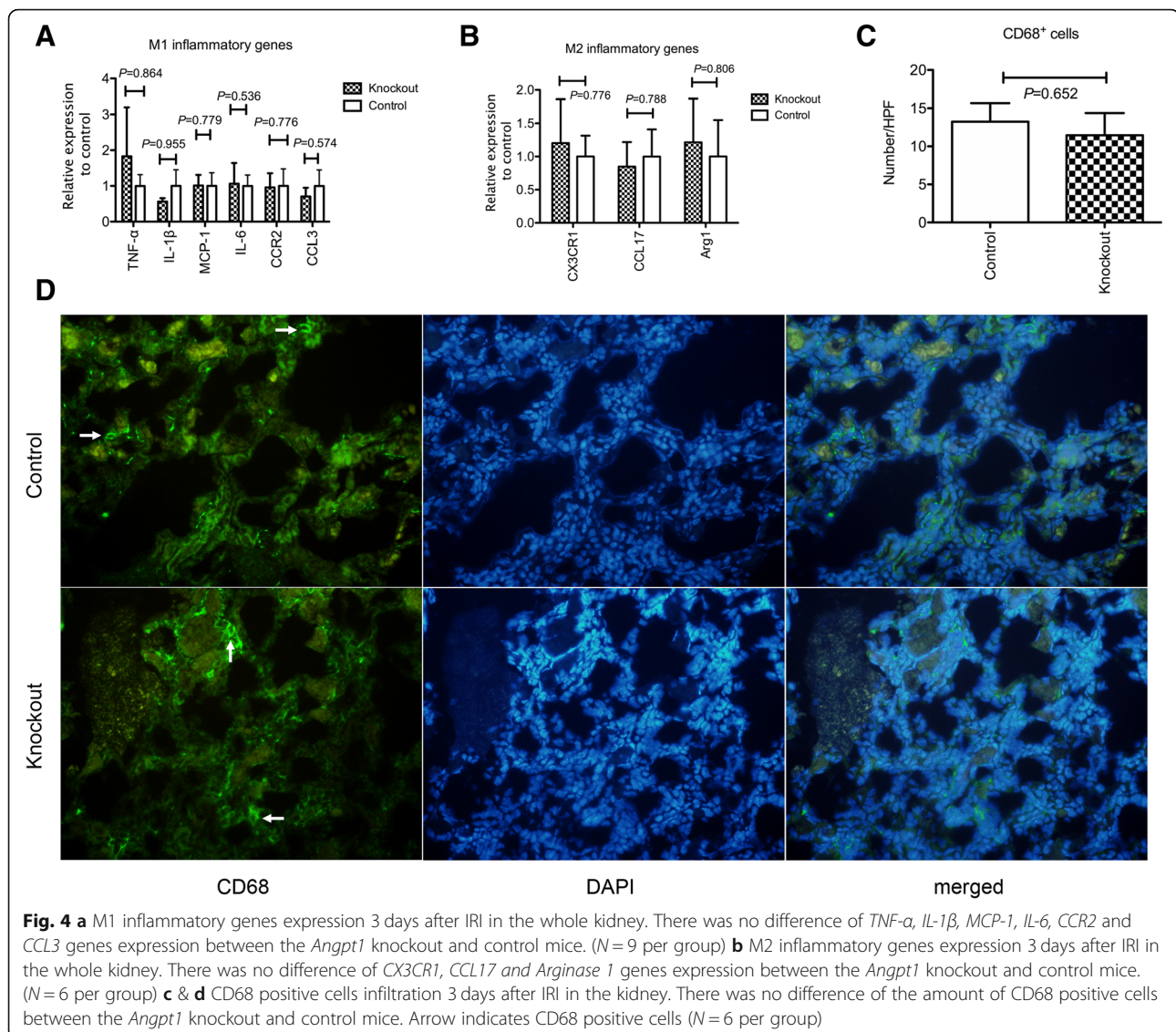
ratio. All values in the bar graphs were expressed as mean  $\pm$  standard error. Data between groups were analysed with Mann-Whitney U test or Bonferroni test.

## Results

### Renal *Angpt1* expression was up-regulated after IRI.

#### *Angpt1* deficiency impaired the renal recovery after IRI

Neoangiogenesis is an important repair process after renal IRI. The mRNA expression of *Angpt1* in the kidney began to increase and remained high 7 and 14 days after IRI (Fig. 2a). To determine whether the up-regulation of *Angpt1* plays a physiological role after renal IRI, we generated inducible whole-body *Angpt1* knockout mice. Compared to the control mice, the mRNA expression of intact *Angpt1* in the kidney was significantly suppressed in these knockout mice on the day of IRI, and 1, 3 and 7 days after IRI (Fig. 2b). Renal protein level of *Angpt1* was also lower



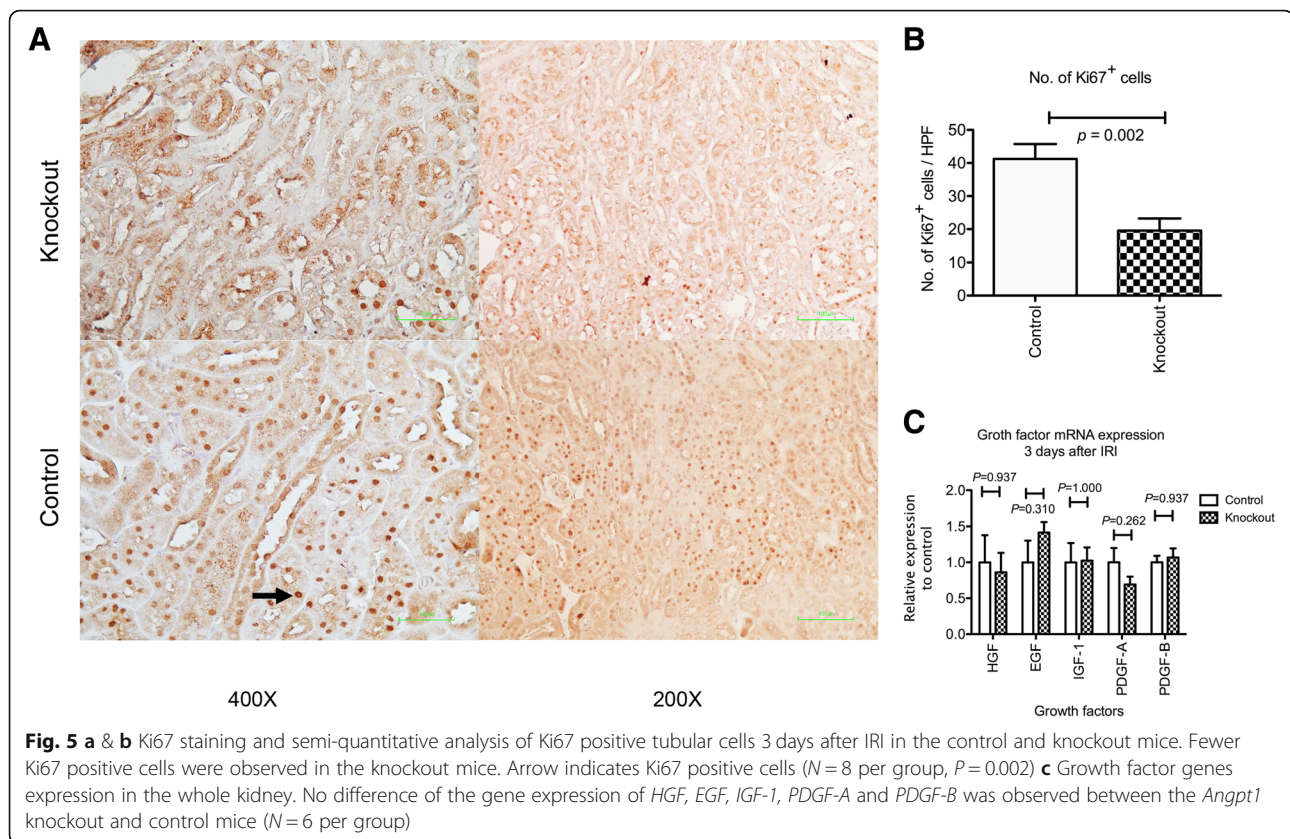
**Fig. 4** **a** M1 inflammatory genes expression 3 days after IRI in the whole kidney. There was no difference of *TNF- $\alpha$* , *IL-1 $\beta$* , *MCP-1*, *IL-6*, *CCR2* and *CCL3* genes expression between the *Angpt1* knockout and control mice. ( $N = 9$  per group) **b** M2 inflammatory genes expression 3 days after IRI in the whole kidney. There was no difference of *CX3CR1*, *CCL17* and *Arginase 1* genes expression between the *Angpt1* knockout and control mice. ( $N = 6$  per group) **c** & **d** CD68 positive cells infiltration 3 days after IRI in the kidney. There was no difference of the amount of CD68 positive cells between the *Angpt1* knockout and control mice. Arrow indicates CD68 positive cells ( $N = 6$  per group)

in the knockout mice than control mice 3 day after IRI (Fig. 2c & d) *Angpt1* knockout in the adulthood did not significantly change daily activity or gross organ appearance of the mice. On day 0 before the IRI, there was no difference of renal function between knockout and control mice (Additional file 1: Figure S1A and 1B). The glomerular permeability, which was assessed according to the degree of urine albuminuria to creatinine ratio, was also not influenced by the *Angpt1* knockout on the day of IRI. (Additional file 1: Figure S1C) The renal pathology also did not reveal any significant anomaly immediately before IRI in the knockout mice. Thus, the effect of the *Angpt1* knockout on renal IRI is not due to the effect of the *Angpt1* knockout during the period between the tamoxifen induction and IRI. The *Angpt1* knockout did not significantly influence renal function 1 day after IRI. However, renal function recovery 3 and 7 days after IRI

was significantly delayed in the knockout mice (Fig. 2e and f). The remaining necrosis was more prominent and renal tubular recovery was significantly impaired in the *Angpt1* knockout mice 7 days after IRI (Fig. 2g) according to the regeneration score evaluated 7 days after IRI (Fig. 2h).

#### Decreases in *Angpt1* impaired renal microvascular regeneration and integrity after IRI

During the repair process after renal IRI, neoangiogenesis occurs to re-establish the microcirculation that is lost during ischemic reperfusion injury. The knockout process prevented the up-regulation of intact *Angpt1* and impaired neoangiogenesis after IRI as revealed by a decreased endothelial CD31 density in the kidney 3 days after IRI (Fig. 3a and b) *Angpt1* is also an important factor for maintaining the integrity and permeability of the



endothelium. Thus, the expression of the intercellular adhesion molecule protein VE cadherin was lower in the *Angpt1* knockout mice 3 days after IRI (Fig. 3c, d).

#### **Angpt1 deficiency did not change the inflammatory process but impaired tubular regeneration after IRI**

Inflammatory reactions play an important role in ischemic reperfusion injury. *Angpt1* has been shown to influence inflammation. However, in our study, we did not observe a difference in the expression of M1 inflammatory genes *TNF- $\alpha$* , *IL1- $\beta$* , *MCP-1*, *CCR2*, *CCL3* and *IL-6* (Fig. 4a) or M2 inflammatory genes *CX3CR1*, *CCL17*, and *Arg1* (Fig. 4b) expression in the kidney 3 days after IRI between knockout and control mice. The above genes expression was also not different 7 days after ischemic injury (Additional file 2: Figure S2). Macrophage infiltration also did not differ between these two groups 3 days after IRI (Fig. 4c, d). Thus, the *Angpt1* knockout did not influence the above-mentioned inflammatory reactions.

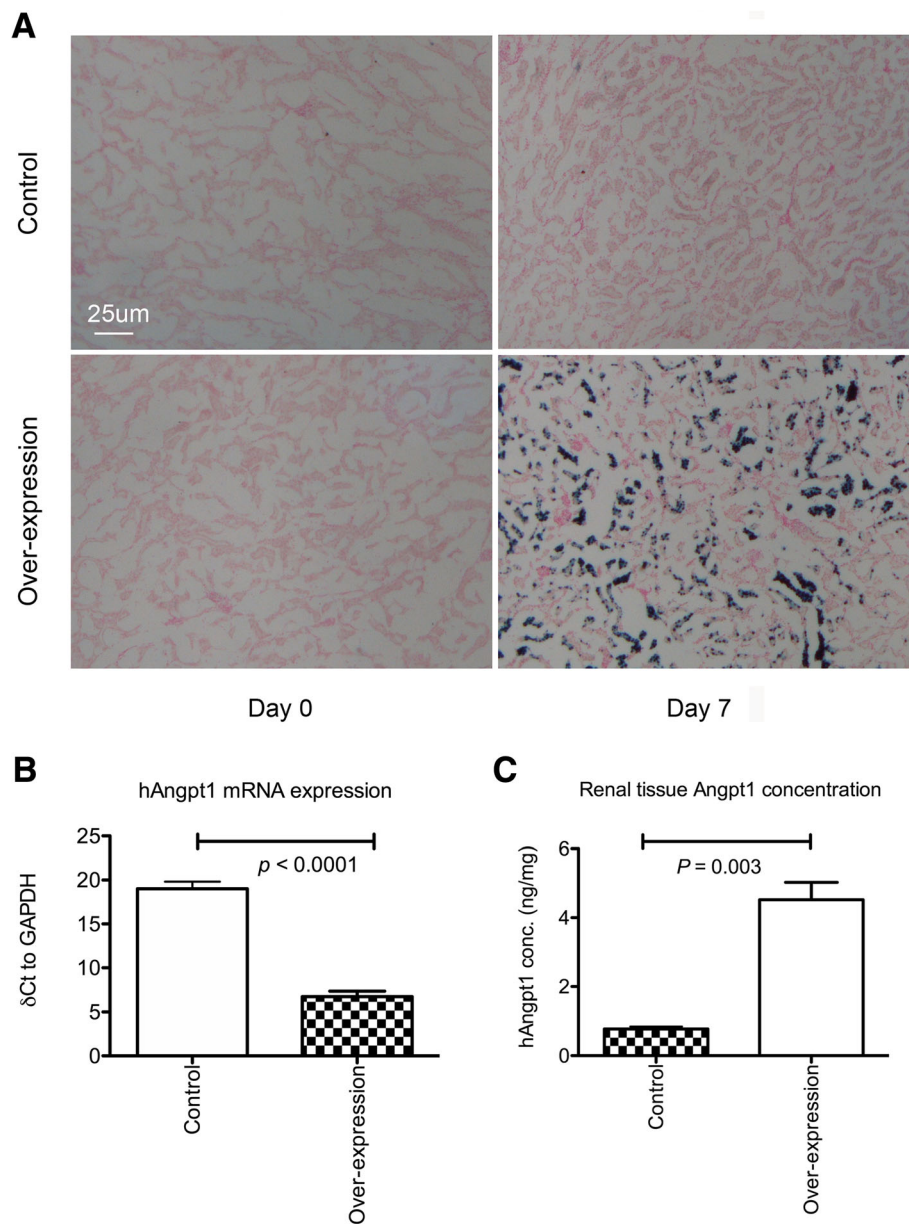
Subsequently, we examined tubular regeneration by Ki67 staining. Fewer Ki67 positive cells were observed in the *Angpt1* knockout mice 3 days after IRI (Fig. 5a, b). However, the gene expression of growth factors, including *HGF*, *EGF*, *IGF-1*, *PDGF-A* and *PDGF-B*, in the kidney 3 days after IRI did not differ between the control

and knockout mice (Fig. 5c). Thus, the *Angpt1* deficiency did not change tubular regeneration by changing the expression of growth factors in the kidney.

#### **Angpt1 over-expression attenuated renal injury induced by IRI**

We investigated whether *Angpt1* supplementation had a beneficial effect on renal IRI and examined its effect using inducible *Angpt1* over-expression mice. The administration doxycycline significantly induced RtTA binding promoter activity in the renal tubular cells which was presented as the  $\beta$ -galactosidase activity on X-gal metabolism in *Angpt1* over-expression mice (Fig. 6a). The renal mRNA expression of human *Angpt1* was significantly up-regulated after the induction with doxycycline, and the expression level remained high 7 days after ischemic reperfusion injury but was almost undetectable or only detected in the very high threshold cycle using quantitative PCR in the control mice (Fig. 6b). Similar higher human *Angpt1* protein level in kidney tissue was also noted 1 day after IRI in the over-expression mice (Fig. 6c). The over-expression of *Angpt1* in the adulthood didn't induce abnormal different daily activity or organ gross appearance in the sham mice. The renal function was also not changed during the whole experimental course and there was also no renal morphological change observed by light microscopy 1 day after sham operation (Fig. 7a, b, c). Based on the lower serum creatinine and





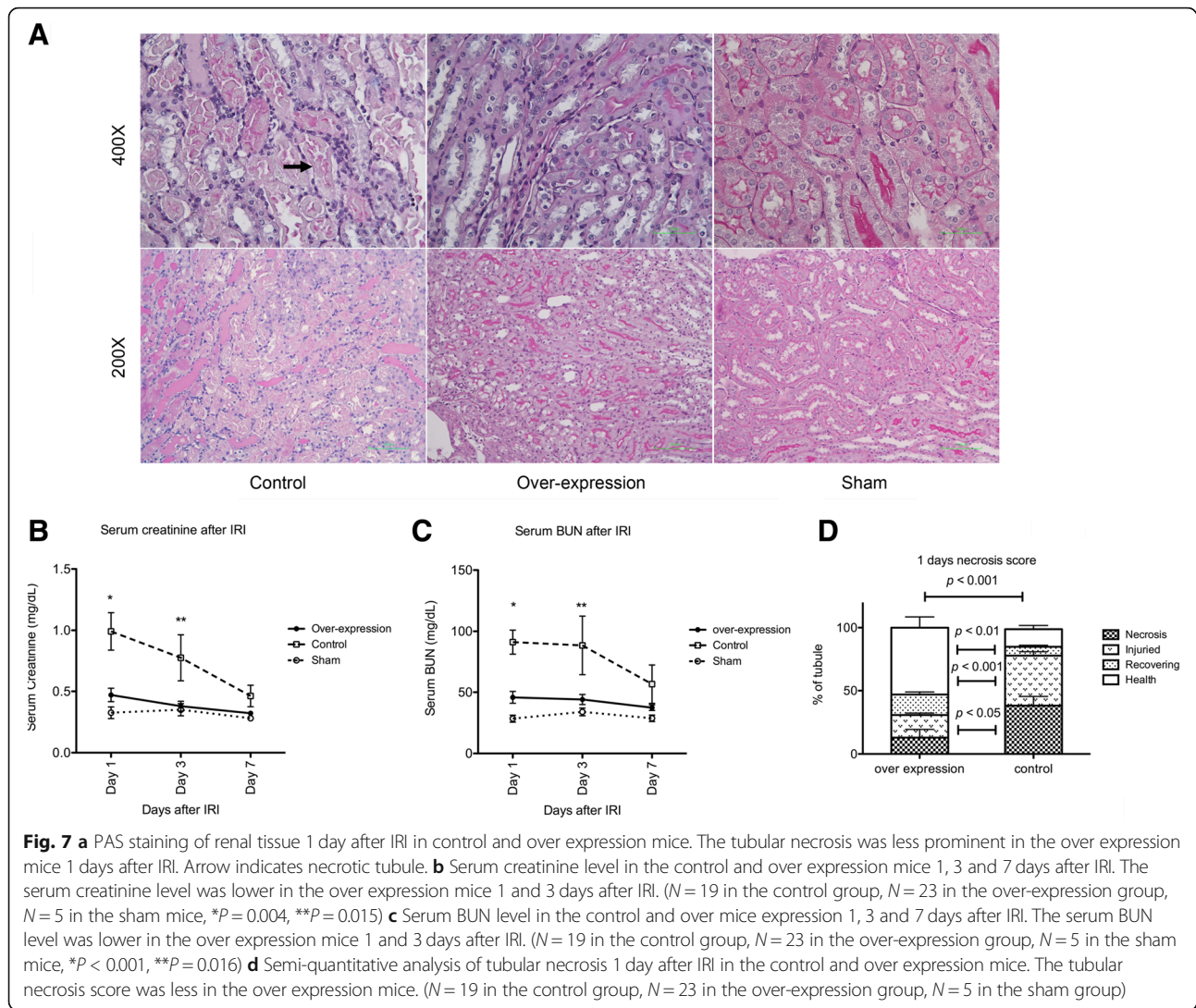
**Fig. 6 a** X-gal staining in the *Angpt1* over-expression and control mice. Positive staining was observed in the tubular cells 7 days after the initiation of supplement of doxycycline in the *Angpt1* over-expression mice. The presence of positive staining indicates that the tetracycline responsive element promoter activity of *Angpt1*. The  $\beta$ -galactosidase activity in the over expression mice was activated. **b**  $\Delta$ Ct (difference in the threshold cycle between *Angpt1* and *GAPDH*) of human *Angpt1* mRNA by quantitative RT-PCR analysis of control and human *Angpt1* over expression mice 1 day after IRI. The  $\Delta$ Ct in the control mice was much higher than that in the over expression mice indicating significant over-expression of human *Angpt1* mRNA was observed in the over-expression mice ( $N = 20$  per group) **c** Renal tissue human *Angpt1* concentration in over-expression and control mice. The over-expression mice had higher renal human *Angpt1* concentration than control mice ( $N = 8$  for each group)

BUN levels 1 and 3 days after ischemic reperfusion injury in the over-expression mice, the over-expression of *Angpt1* can significantly attenuate the renal injury induced by ischemic reperfusion injury (Fig. 7b and c). The degree of renal tubular necrosis was also less severe in the over-expression group 1 day after ischemic reperfusion injury (Fig. 7a and d). Thus, the over-expression of *Angpt1* enhances tubular cell survival during the early phase of

stress induced by ischemic reperfusion renal injury. Similar results of less renal tubular necrosis were also seen 3 days after IRI (Additional file 3: Figure S3A and 3B).

#### Angpt1 over-expression promoted endothelium survival after renal IRI

*Angpt1* is known to promote endothelium survival by activating the Akt signalling pathway (Kim et al., 2000;



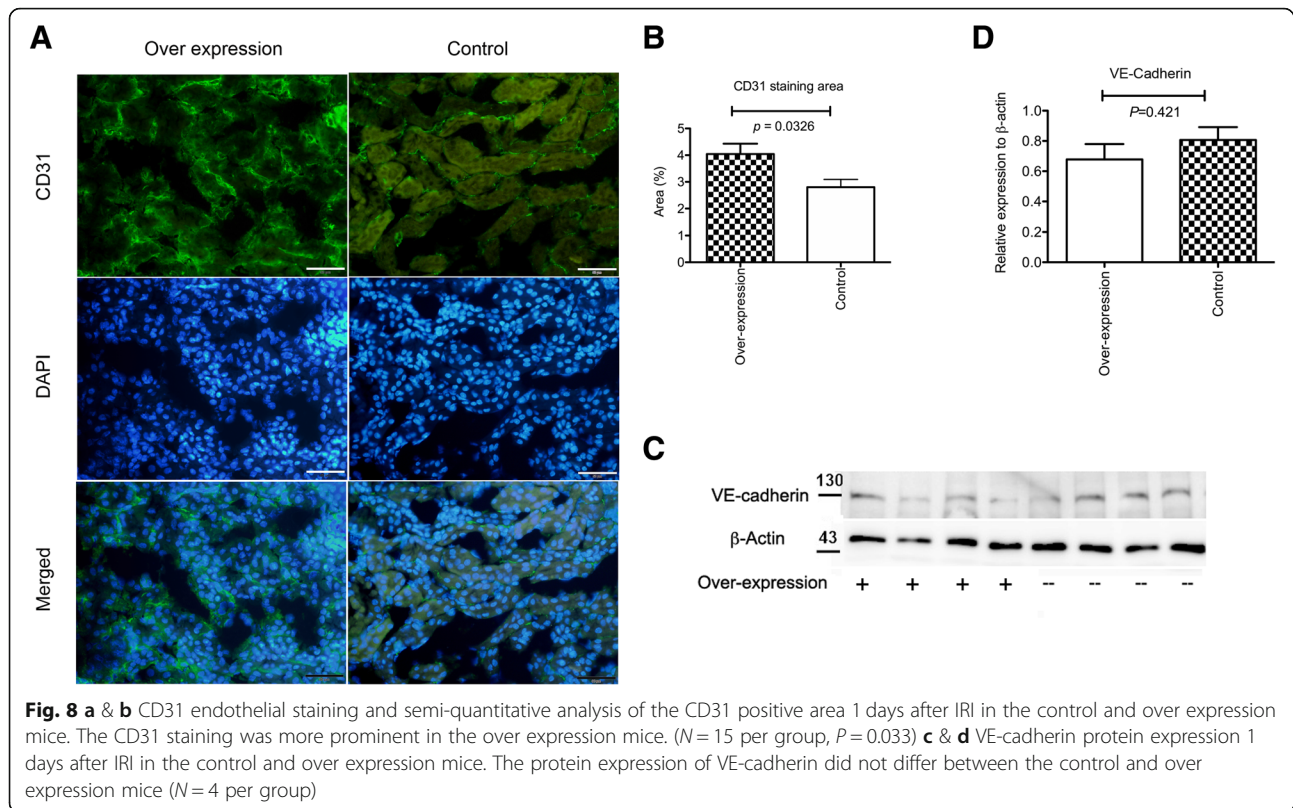
Papapetropoulos et al., 2000). We investigated whether Angpt1 supplementation could attenuate the endothelium loss induced by IRI. The Angpt1 supplementation by the over-expression in the kidney attenuated the loss of endothelial CD31 density 1 day after IRI (Fig. 8a and b). Similar finding was also found in over-expression mice 3 days after IRI (Additional file 4: Figure S4). However, the Western blotting results did not show any protective effect of additional Angpt1 on the loss of VE-cadherin 1 day after IRI (Fig. 8c and d).

#### Angpt1 over-expression increased both M1 and M2 inflammatory genes expression

The Angpt1 over-expression simultaneously stimulated the expression of the M1 type inflammatory genes *TNF- $\alpha$*  and *CCR2* and M2 type inflammatory genes *CXCR3* 1 day after ischemic reperfusion injury (Fig. 9a). No change was

observed in the renal mRNA expression of *MCP-1*, *IL-6*, *IL-1 $\beta$* , *CXCL2*, *CCL17*, or *Arginase 1* renal mRNA following the *Angpt1* over-expression (Fig. 9b). Although the inflammatory gene expression was higher in the over-expression mice, no difference was observed in the amount of macrophage infiltration 1 day after IRI between these two groups (Fig. 9c, d). Three days after IRI, there was no difference of M1 (*TNF- $\alpha$* , *IL-1 $\beta$* , *MCP-1*, *IL-6* and *CCR2*) and M2 (*CX3CR1*, *CCL-17*, and *Arg1*) inflammatory genes between over-expression and control mice. Only the M1 inflammatory gene *CXCL2* was higher in the control mice (Additional file 5: Figure S5).

**Angpt1 over-expression enhanced the renal expression of survival growth factors and attenuated tubular apoptosis** Tubular necrosis was attenuated by the *Angpt1* over-expression. Thus, certain factors enhanced the survival



of tubular cells. The mRNA expression of *EGF*, *HGF* and *IGF-1* in the kidney tissue was up-regulated in the *Angpt1* over-expression mice. No difference was observed in *PDGF-A* and *PDGF-B* between the over-expression and control mice (Fig. 10a). The TUNNEL staining also demonstrated the tubular apoptosis was less prominent in the *Angpt1* over-expression mice (Fig. 10b and c). Thus, the less tubular apoptosis induced by over-expression of *Angpt1* was associated with up-regulation of some survival growth factors genes.

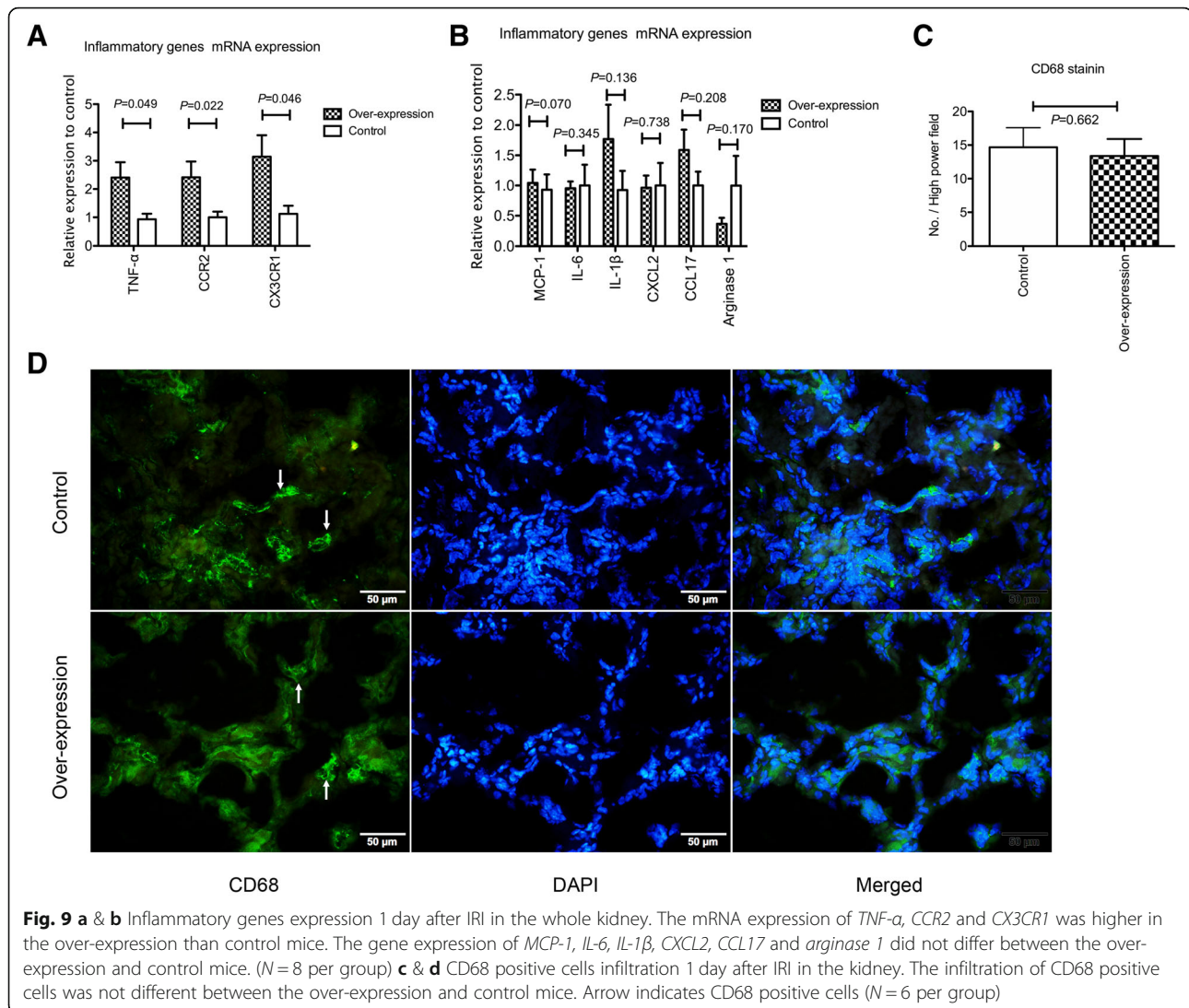
## Discussion

According to our results, *Angpt1* deficiency impairs the processes of neoangiogenesis and recovery from renal IRI. In contrast, *Angpt1* over-expression attenuates the loss of the endothelium and renal tubular necrosis induced by IRI. Endothelial survival and regeneration were highly impacted by the alterations in *Angpt1* expression in our renal IRI model.

In normal mice, the renal *Angpt1* expression did not change one and three days after IRI, began to increase after seven days and was sustained 14 days after IRI. Thus, *Angpt1* may play a role in the repair process during the later, but not early, phase of IRI. In our studies, the *Angpt1* knockout delayed the recovery from renal IRI three and seven days after injury. This finding is

consistent with the finding of increased *Angpt1* during the later phase of IRI. During the repair process after renal IRI, the development of neo-angiogenesis is important for establishing circulation in the renal tissue. Because *Angpt1* mediates the remodelling and maturation of new vessels in angiogenesis (Thurston et al., 1999), the *Angpt1* knockout likely impairs the integrity of newly generated microvasculature during the later phase after IRI, which leads to sustained, increased capillary permeability and decreased renal blood flow. This hypothesis is supported by the reduced CD31 staining and decreased expression of VE-cadherin in the present study.

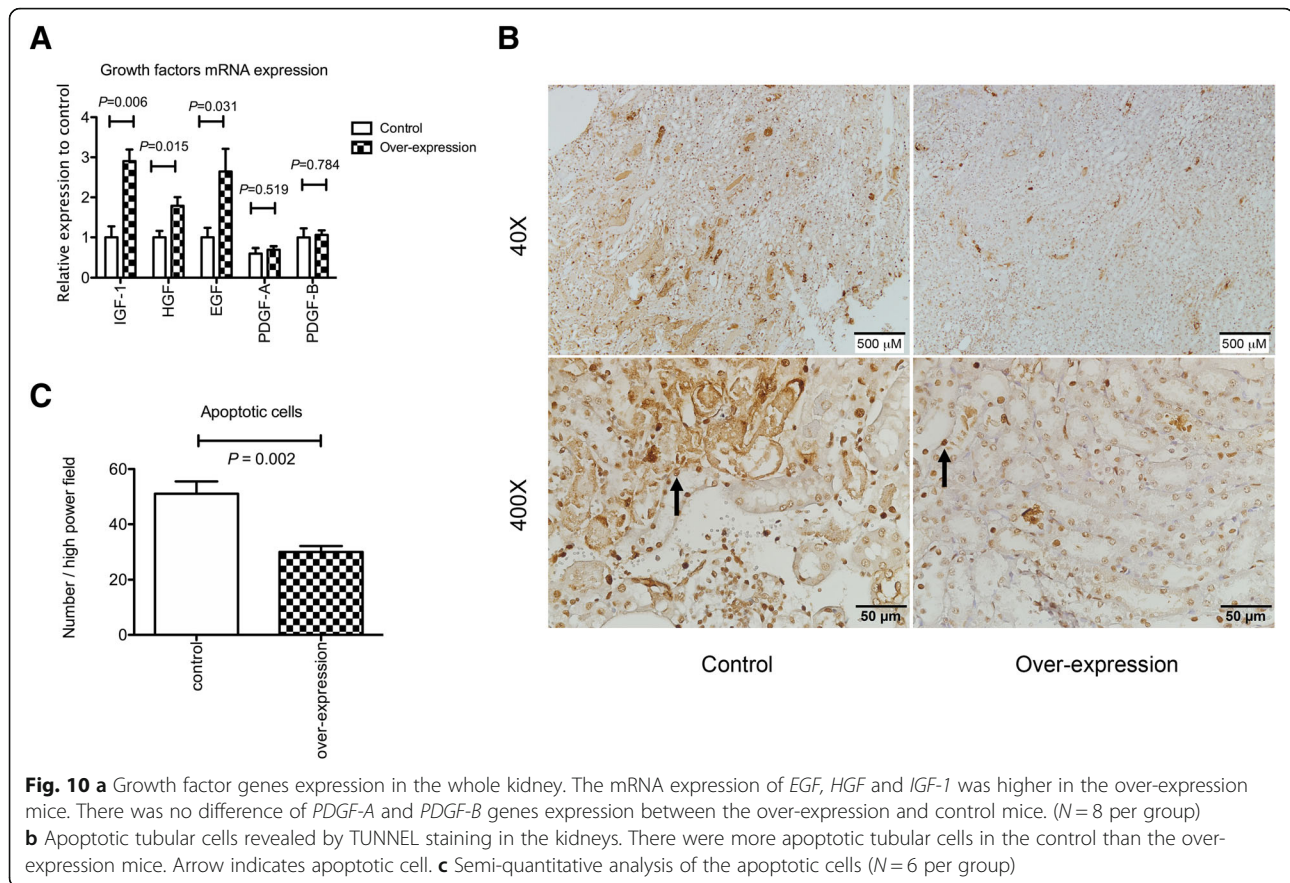
Furthermore, the renal function was better preserved and tubular necrosis was less severe in the over-expression mice 1 and 3 days after IRI. The immunostaining analysis demonstrated a reduced loss of CD31, indicating better endothelium survival after renal IRI. *Angpt1* regulates endothelium survival via the PI3K/Akt signal transduction pathway (Kim et al., 2000; Papapetropoulos et al., 2000). *Angpt1* also reinforces the endothelial tight junctions during endotoxemia (Hwang et al., 2009) and prevents VEGF-induced endothelial permeability (Gavard et al., 2008). Damage to renal vascular endothelial cells may contribute to the continued ischemia of renal tubular cells (Sutton et al., 2002). The



restoration of the endothelial cell structure is associated with resolution in vascular tone and reversal of stasis, which improves the severity of ischemia. The high *Angpt1* level induced by over-expression appears to exert a renal protective effect by enhancing endothelium survival. This result is consistent with previous observations in other IRI organ damage, such as native or transplanted hearts (Lee et al., 2011; Syrjala et al., 2015). In addition, the expression of the growth factors *EGF*, *HGF* and *IGF-1* was augmented in the *Angpt1* over-expression mice. These growth factors could originate from surviving tubular cells, endothelial cell or other renal cells. Kobayashi et al. reported that *Angpt1* could stimulate the endothelium to secrete HGF, which mediates smooth muscle cell recruitment (Kobayashi et al., 2006). Whether *Angpt1* can stimulate the endothelium to exert protective

paracrine function in renal IRI remains an unanswered question worthy of further exploration.

The inflammation status may pose a potential hazard to IRI renal damage mediated by *Angpt1*. Seok et al. reported that *Angpt1* elicits pro-inflammatory responses in monocytes and differentiating macrophages (Seok et al., 2013). However, *Angpt1* has been shown to reduce inflammation. Hegeman et al. reported that *Angpt1* treatment reduced inflammation in ventilator-induced lung injury (Hegeman et al., 2010). The *Angpt1*/Tie2 signalling pathway inhibits the lipopolysaccharide-induced activation of RAW264.7 macrophage cells (Gu et al., 2010). In our *Angpt1* knockout mouse model, no difference was observed in the expression of pro-inflammatory genes, such as *TNF- $\alpha$* , *IL1- $\beta$* , *MCP-1* and *IL-6*. Thus, the down-regulation of *Angpt1* does not appear to



influence the inflammatory process during the first few days after renal IRI. In contrast, in the over-expression mouse model, the high levels of *Angpt1* significantly activated the gene expression of *TNF- $\alpha$* , *CCR2* and *CX3CR1*. In Li's study, the number of macrophages increased in the mouse kidney one hour after reperfusion, peaked at 24 h and remained high for seven days. This infiltration was mediated by *CCR2* and *CX3CR1* (Li et al., 2008). However, in this study, the increase in *CCR2* and *CX3CR1* did not attract more macrophages to the renal tissue in the *Angpt1* over-expression mice. Although a higher inflammatory gene expression was observed in the *Angpt1* over-expression mice, the renal function remained preserved, and renal tubular necrosis was less prominent than that in the control mice. A more detailed examination of macrophage behaviour is required since certain macrophages also express the *tie2* receptor, which may influence the M1/M2 phenotype switch. In a limb ischemia model, *Angpt1*-mediated *Phd2* repression can switch *Tie2* receptor-bearing macrophages to the pro-arteriogenic M2-like phenotype (Hamm et al., 2013). *Tie2*-expressing monocytes/macrophages may regulate revascularization in the ischemic limb (Patel et al., 2013). *Tie2*-bearing

macrophages from patients with critical limb ischemia display greater proangiogenic activity than *Tie2*-negative monocytes in vitro (Patel et al., 2013). *Tie2*-expressing monocytes/macrophages support angiogenesis in tumours and remodelling tissues (Pucci et al., 2009; Coffelt et al., 2010; Capobianco et al., 2011; Mazzieri et al., 2011). The expression of both M1 inflammatory genes, such as *TNF- $\alpha$ /CCR2*, and M2 inflammatory genes, such as *CX3CR1*, was simultaneously up-regulated in the over-expression mice. Thus, the up-regulation of *Angpt1* likely prompts pro-inflammatory responses in conjunction with repair processes, including angiogenesis in renal IRI, eventually attenuating renal damage.

## Conclusion

*Angpt1* augmentation enhances endothelium survival during the early phase of renal IRI, and *Angpt1* deficiency impairs neo-angiogenesis and repair during the later phase of renal IRI. Thus, the down-regulation of *Angpt1* in clinical conditions, such as sepsis, could be an important factor delaying recovery from AKI. Supplementation with high doses of *Angpt1* could be beneficial in preventing renal damage and enhancing renal recovery from AKI.

## Additional files

**Additional file 1: Figure S1.** Renal function and proteinuria just before the induction of IRI in the *Angpt1* knockout and control mice. The serum creatinine level A), BUN level and C) urine albumin creatinine ratio was not different between the *Angpt1* knockout and control mice ( $N = 9$  for each group). (TIF 321 kb)

**Additional file 2: Figure S2.** A) M1 inflammatory genes expression 7 days after IRI in the whole kidney. There was no difference of *TNF- $\alpha$* , *IL-1 $\beta$* , *MCP-1*, *IL-6*, *CCR2* and *CCL3* genes expression between the *Angpt1* knockout and control mice. ( $N = 8$  per group) B) M2 inflammatory genes expression 7 days after IRI in the whole kidney. There was no difference of *CX3CR1*, *CCL17* and *Arginase 1* genes expression between the *Angpt1* knockout and control mice ( $N = 8$  per group). (TIF 301 kb)

**Additional file 3: Figure S3.** A) PAS staining of renal tissue 3 days after IRI in control and over-expression mice. The tubular necrosis was less prominent and healthy tubules were more in over-expression mice 3 days after IRI. B) Semi-quantitative analysis of tubular necrosis and tubular recovery 3 days after IRI in the control and over-expression mice. The tubular necrosis was less and more healthy tubules were noted in the over expression mice ( $N = 6$  for each group). (TIF 34189 kb)

**Additional file 4: Figure S4.** A & B) CD31 endothelial staining and semi-quantitative analysis of the CD31 positive area 3 days after IRI in the control and over-expression mice. The CD31 staining was more prominent in the over expression mice ( $N = 9$  per group,  $P = 0.038$ ). (TIF 6861 kb)

**Additional file 5: Figure S5.** A) M1 inflammatory genes expression 3 days after IRI in the whole kidney. There was no difference of *TNF- $\alpha$* , *IL-1 $\beta$* , *MCP-1*, *IL-6*, and *CCR2* genes expression between the *Angpt1* over-expression and control mice. The mRNA expression of *CXCL2* was higher in the control mice ( $N = 8$  per each group). M2 inflammatory genes 3 days after IRI in the kidney. There was no difference of *CX3CR1*, *CCL17* and *Arginase 1* genes expression between the *Angpt1* over-expression and control mice ( $N = 8$  per group). (TIF 262 kb)

## Abbreviations

AKI: Acute kidney injury; Angpt1: Angiopietin 1; Arg1: Arginase 1; CCL17: Chemokine (C-C motif) ligand 17; CCL3: Chemokine (C-C motif) ligand 3; CCR2: C-C chemokine receptor type 2; CX3CR1: CX3C chemokine receptor 1; CXCL2: Chemokine (C-X-C motif) ligand 2; EGF: Epidermal growth factor; HGF: Hepatocyte growth factor; IGF-1: Insulin like growth factor-1; IL-1 $\beta$ : Interleukin-1 $\beta$ ; IL-6: Interleukin-6; IRI: Ischemic reperfusion injury; MCP-1: Monocyte chemoattractant protein-1; PDGF-A: Platelet derived growth factor-A; PDGF-B: Platelet derived growth factor-B; Tie 2: Tyrosine kinase with Ig and EGF homology domains 2; TNF- $\alpha$ : Tumour necrosis- $\alpha$

## Acknowledgements

We thank Dr. Robert Koesters and Dr. Daniel Dumont for providing the transgenic mice. We also thank Dr. Kuo-Tong Huang for technical support. We would like to acknowledge the service provided by the RCF7 Laboratory of the Department of Medical Research at the National Taiwan University Hospital.

## Funding

This study was supported by grants from the Mrs. Hsiu-Chin Lee Kidney Research Foundation and Ministry of Science and Technology, Taiwan, grant No. Most 105–2314-B-002-046 and MOST 105–2314-B-002-098-MY3.

## Availability of data and materials

The datasets used and/or analysed during the current study are available from the corresponding author on reasonable request.

## Authors' contributions

WCC designed the study, applied fund, did animal experiments and wrote the manuscript. YCH did animal, immunofluorescence and qPCR experiments. TIF did animal, qPCR, immunofluorescence, ELISA and Western blotting experiments. PMC did animal and qPCR experiments. FCC did Western blotting and immunohistochemistry experiments. C.F.L. did qPCR experiments. V.C.W. and S.L.L. interpreted the data. Y.M.C. designed the study, applied fund and revised the manuscript. All authors read and approved the final manuscript.

## Ethics approval and consent to participate

The study was approved by the Institutional Animal Care and Use Committee, National Taiwan University College of Medicine. All experiments were performed according to relevant guidelines and regulations.

## Consent for publication

There is no contains about any individual person's data in any form and there is no need to get consent for publication.

## Competing interests

The authors declare that they have no competing interests.

## Publisher's Note

Springer Nature remains neutral with regard to jurisdictional claims in published maps and institutional affiliations.

## Author details

<sup>1</sup>Department of Internal Medicine, National Taiwan University Hospital, No. 7, Jhong-Shan South Road, Taipei 100, Taiwan. <sup>2</sup>Department of Internal Medicine, Taoyuan General Hospital, Ministry of Health and Welfare, Taoyuan City, Taiwan. <sup>3</sup>Graduate Institute of Physiology, College of Medicine, National Taiwan University, Taipei, Taiwan. <sup>4</sup>College of Medicine, National Taiwan University, Taipei, Taiwan.

Received: 31 July 2018 Accepted: 24 January 2019

Published online: 13 February 2019

## References

- Brodsky SV, et al. Endothelial dysfunction in ischemic acute renal failure: rescue by transplanted endothelial cells. *Am J Physiol Renal Physiol.* 2002;282:F1140–9.
- Capobianco A, et al. Proangiogenic Tie2(+) macrophages infiltrate human and murine endometriotic lesions and dictate their growth in a mouse model of the disease. *Am J Pathol.* 2011;179:2651–9.
- Coffelt SB, et al. Angiopietin-2 regulates gene expression in TIE2-expressing monocytes and augments their inherent proangiogenic functions. *Cancer Res.* 2010;70:5270–80.
- Conger J, Robinette J, Villar A, Raji L, Shultz P. Increased nitric oxide synthase activity despite lack of response to endothelium-dependent vasodilators in postischemic acute renal failure in rats. *J Clin Invest.* 1995;96:631–8.
- Ebihara I, et al. Angiopietin balance in septic shock patients with acute kidney injury: effects of direct Hemoperfusion with Polymyxin B-immobilized fiber. *Ther Apher Dial.* 2016;20:368–75.
- Gavard J, Patel V, Gutkind JS. Angiopietin-1 prevents VEGF-induced endothelial permeability by sequestering Src through mDia. *Dev Cell.* 2008;14:25–36.
- Giuliano JS Jr, et al. Admission angiopiopietin levels in children with septic shock. *Shock.* 2007;28:650–4.
- Gu HP, et al. Angiopietin-1/Tie2 signaling pathway inhibits lipopolysaccharide-induced activation of RAW264.7 macrophage cells. *Biochem Biophys Res Commun.* 2010;392:178–82.
- Hamm A, et al. PHD2 regulates arteriogenic macrophages through TIE2 signalling. *EMBO Mol Med.* 2013;5:843–57.
- Hegeman MA, et al. Angiopietin-1 treatment reduces inflammation but does not prevent ventilator-induced lung injury. *PLoS One.* 2010;5:e15653.
- Hesketh EE, et al. Renal ischaemia reperfusion injury: a mouse model of injury and regeneration. *J Vis Exp.* 2014;88:e51816.
- Hwang JA, et al. COMP-Ang1 ameliorates leukocyte adhesion and reinforces endothelial tight junctions during endotoxemia. *Biochem Biophys Res Commun.* 2009;381:592–6.
- Karlberg L, Norlen BJ, Ojteg G, Wolgast M. Impaired medullary circulation in post-ischemic acute-renal-failure. *Acta Physiol Scand.* 1983;118:11–7.
- Kim I, et al. Angiopietin-1 regulates endothelial cell survival through the phosphatidylinositol 3'-kinase/Akt signal transduction pathway. *Circ Res.* 2000;86:24–9.
- Kim KT, et al. Oligomerization and multimerization are critical for angiopiopietin-1 to bind and phosphorylate Tie2. *J Biol Chem.* 2005;280:20126–31.
- Kobayashi H, DeBusk LM, Babichev YO, Dumont DJ, Lin PC. Hepatocyte growth factor mediates angiopiopietin-induced smooth muscle cell recruitment. *Blood.* 2006;108:1260–6.
- Kwon O, Hong SM, Ramesh G. Diminished NO generation by injured endothelium and loss of macula densa nNOS may contribute to sustained acute kidney injury after ischemia-reperfusion. *Am J Physiol-Renal.* 2009;296:F25–33.

- Le Dorze M, Legrand M, Payen D, Ince C. The role of the microcirculation in acute kidney injury. *Curr Opin Crit Care*. 2009;15:503–8.
- Lee SW, et al. Angiotensin-1 protects heart against ischemia/reperfusion injury through VE-cadherin dephosphorylation and myocardial integrin-beta1/ERK/caspase-9 phosphorylation cascade. *Mol Med*. 2011;17:1095–106.
- Li L, et al. The chemokine receptors CCR2 and CX3CR1 mediate monocyte/macrophage trafficking in kidney ischemia-reperfusion injury. *Kidney Int*. 2008;74:1526–37.
- Lieberthal W, Wolf EF, Rennke HG, Valeri CR, Levinsky NG. Renal ischemia and reperfusion impair endothelium-dependent vascular relaxation. *Am J Phys*. 1989;256:F894–900.
- Lobov IB, Brooks PC, Lang RA. Angiotensin-2 displays VEGF-dependent modulation of capillary structure and endothelial cell survival in vivo. *Proc Natl Acad Sci U S A*. 2002;99:11205–10.
- Maisonpierre PC, et al. Angiotensin-2, a natural antagonist for Tie2 that disrupts in vivo angiogenesis. *Science*. 1997;277:55–60.
- Mason J, Torhorst J, Welsch J. Role of the medullary perfusion defect in the pathogenesis of ischemic renal-failure. *Kidney Int*. 1984;26:283–93.
- Mazzieri R, et al. Targeting the ANG2/TIE2 Axis inhibits tumor growth and metastasis by impairing angiogenesis and disabling rebounds of proangiogenic myeloid cells. *Cancer Cell*. 2011;19:512–26.
- Mofarrah M, et al. Regulation of angiotensin expression by bacterial lipopolysaccharide. *Am J Physiol Lung Cell Mol Physiol*. 2008;294:L955–63.
- Morisada T, Kubota Y, Urano T, Suda T, Oike Y. Angiotensins and angiotensin-like proteins in angiogenesis. *Endothelium*. 2006;13:71–9.
- Olof P, Hellberg A, Kallskog OT, Ojteg G, Wolgast M. Peritubular capillary-permeability and intravascular Rbc aggregation after ischemia - effects of neutrophils. *Am J Physiol*. 1990;258:F1018–25.
- Papapetropoulos A, et al. Angiotensin-1 inhibits endothelial cell apoptosis via the Akt/survivin pathway. *J Biol Chem*. 2000;275:9102–5.
- Patel AS, et al. TIE2-expressing monocytes/macrophages regulate revascularization of the ischemic limb. *EMBO Mol Med*. 2013;5:858–69.
- Patschan D, et al. Angiotensin-1 treated early endothelial outgrowth cells (eEOCs) are activated in vitro and reduce renal damage in murine acute ischemic kidney injury (iAKI). *BMC Nephrol*. 2013;14:227.
- Pomfy M, Nicak A, Mojzis J, Huska J, Benes L. Experimental studies of some microcirculatory factors in serious brain ischemia after Stobadine pretreatment. *Mol Chem Neuropathol*. 1995;25:115–22.
- Pucci F, et al. A distinguishing gene signature shared by tumor-infiltrating Tie2-expressing monocytes, blood “resident” monocytes, and embryonic macrophages suggests common functions and developmental relationships. *Blood*. 2009;114:901–14.
- Ricciuto DR, et al. Angiotensin-1 and angiotensin-2 as clinically informative prognostic biomarkers of morbidity and mortality in severe sepsis. *Crit Care Med*. 2011;39:702–10.
- Robinson-Cohen C, et al. Association of markers of endothelial dysregulation Ang1 and Ang2 with acute kidney injury in critically ill patients. *Crit Care*. 2016;20:207.
- Seok SH, et al. Angiotensin-1 elicits pro-inflammatory responses in monocytes and differentiating macrophages. *Mol Cells*. 2013;35:550–6.
- Suri C, et al. Requisite role of angiotensin-1, a ligand for the TIE2 receptor, during embryonic angiogenesis. *Cell*. 1996;87:1171–80.
- Sutton TA, Fisher CJ, Molitoris BA. Microvascular endothelial injury and dysfunction during ischemic acute renal failure. *Kidney Int*. 2002;62:1539–49.
- Sutton TA, et al. Injury of the renal microvascular endothelium alters barrier function after ischemia. *Am J Physiol-Renal*. 2003;285:F191–8.
- Sryjala SO, et al. Donor heart treatment with COMP-Ang1 limits ischemia-reperfusion injury and rejection of cardiac allografts. *Am J Transplant*. 2015;15:2075–84.
- Thurston G, et al. Leakage-resistant blood vessels in mice transgenically overexpressing angiotensin-1. *Science*. 1999;286:2511–4.
- van der Poll T, van Deventer SJH. Cytokines and anticytokines in the pathogenesis of sepsis. *Infect Dis Clin N Am*. 1999;13:413.
- Wu VC, et al. Acute-on-chronic kidney injury at hospital discharge is associated with long-term dialysis and mortality. *Kidney Int*. 2011;80:1222–30.
- Wu VC, et al. Long-term outcomes after dialysis-requiring acute kidney injury. *Biomed Res Int*. 2014;2014:365186.
- Yamamoto T, et al. Intravital videomicroscopy of peritubular capillaries in renal ischemia. *Am J Physiol Renal Physiol*. 2002;282:F1150–5.

**Ready to submit your research? Choose BMC and benefit from:**

- fast, convenient online submission
- thorough peer review by experienced researchers in your field
- rapid publication on acceptance
- support for research data, including large and complex data types
- gold Open Access which fosters wider collaboration and increased citations
- maximum visibility for your research: over 100M website views per year

**At BMC, research is always in progress.**

Learn more [biomedcentral.com/submissions](https://www.biomedcentral.com/submissions)

